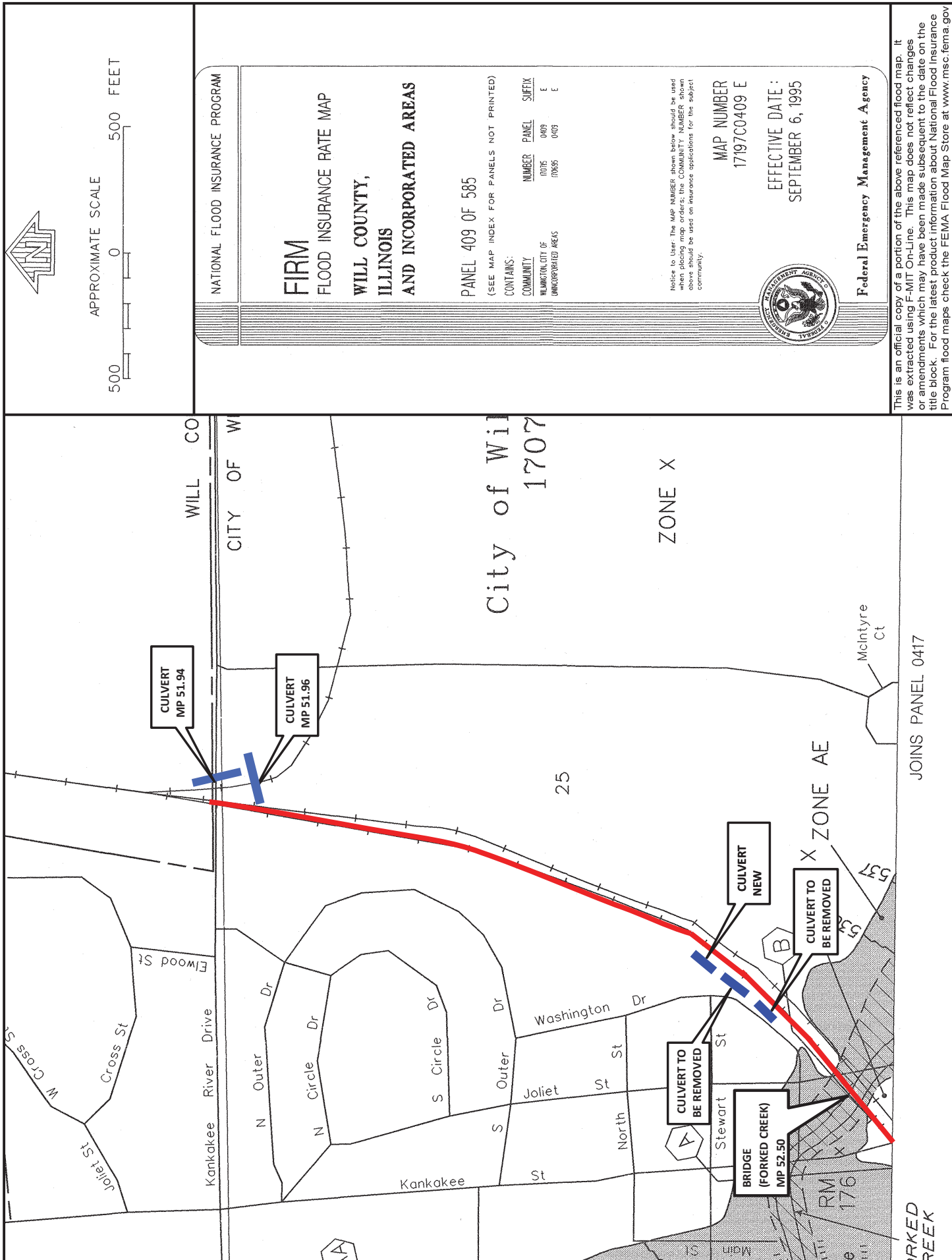


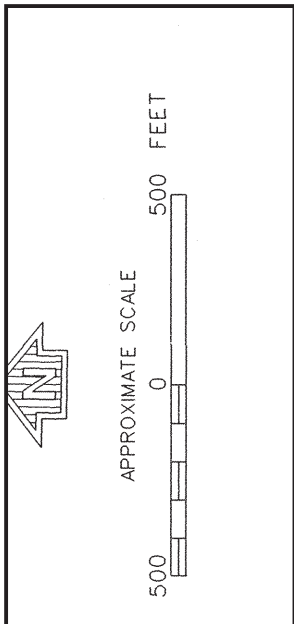
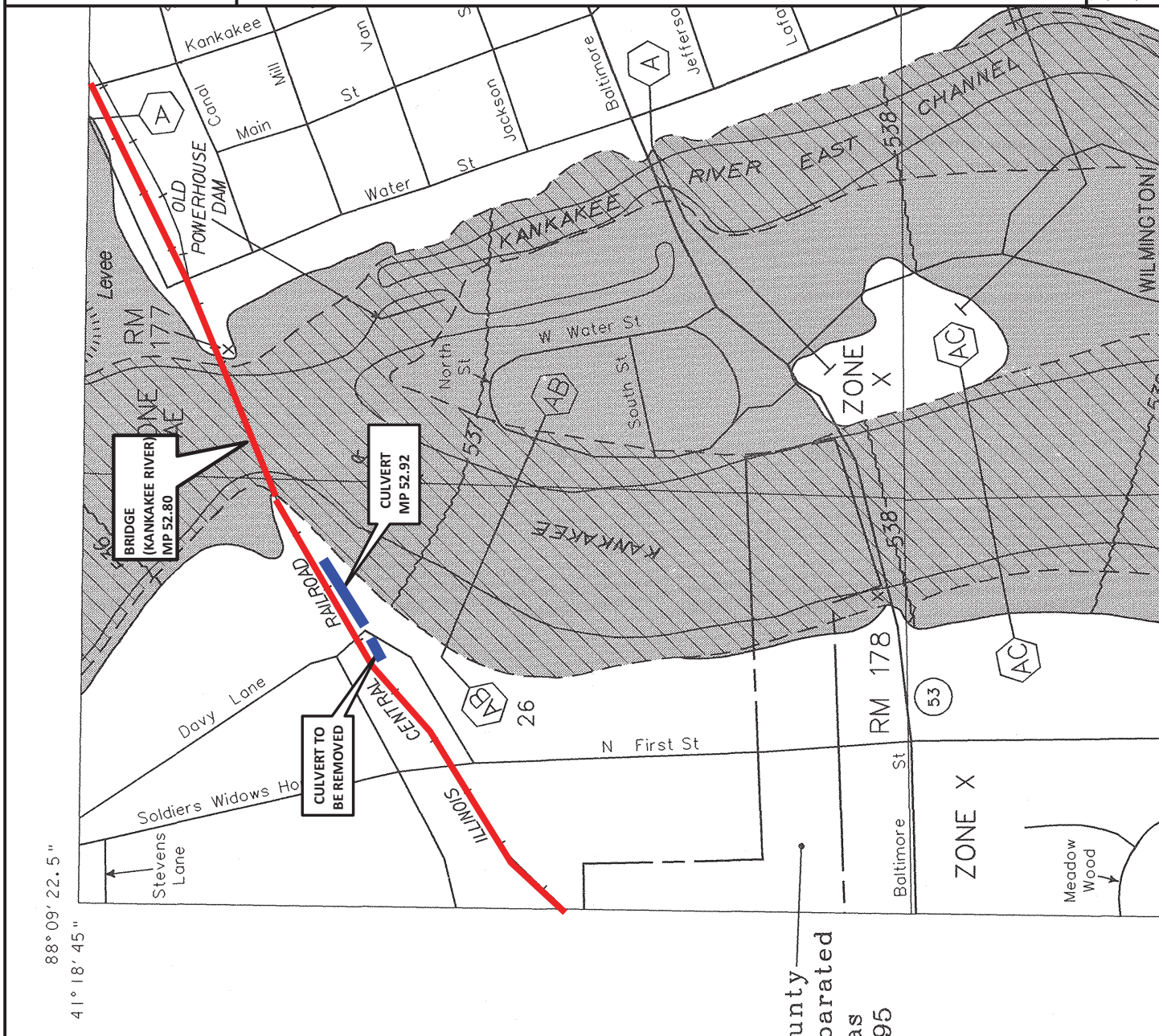
# *Appendix A*

---

## **Flood Insurance Rate Maps**







NATIONAL FLOOD INSURANCE PROGRAM

**FIRM**  
FLOOD INSURANCE RATE MAP  
WILL COUNTY,  
ILLINOIS  
AND INCORPORATED AREAS

PANEL 417 OF 585

(SEE MAP INDEX FOR PANELS NOT PRINTED)

CONTAINS:

COMMUNITY	NUMBER	PANEL	SUFFIX
WILMINGTON CITY OF	10035	0417	E
UNINCORPORATED AREAS	10555	0417	E

Notice to User: The MAP NUMBER shown below should be used when placing map orders; the COMMUNITY NUMBER shown above should be used on insurance applications for the subject community.

MAP NUMBER  
17197C0417 E

EFFECTIVE DATE:  
SEPTEMBER 6, 1995

Federal Emergency Management Agency

This is an official copy of a portion of the above referenced flood map. It was extracted using F-MIT On-Line. This map does not reflect changes or amendments which may have been made subsequent to the date on the title block. For the latest product information about National Flood Insurance Program flood maps check the FEMA Flood Map Store at [www.msc.fema.gov](http://www.msc.fema.gov)

