

www.idothesr.org

www.connectthemidwest.com



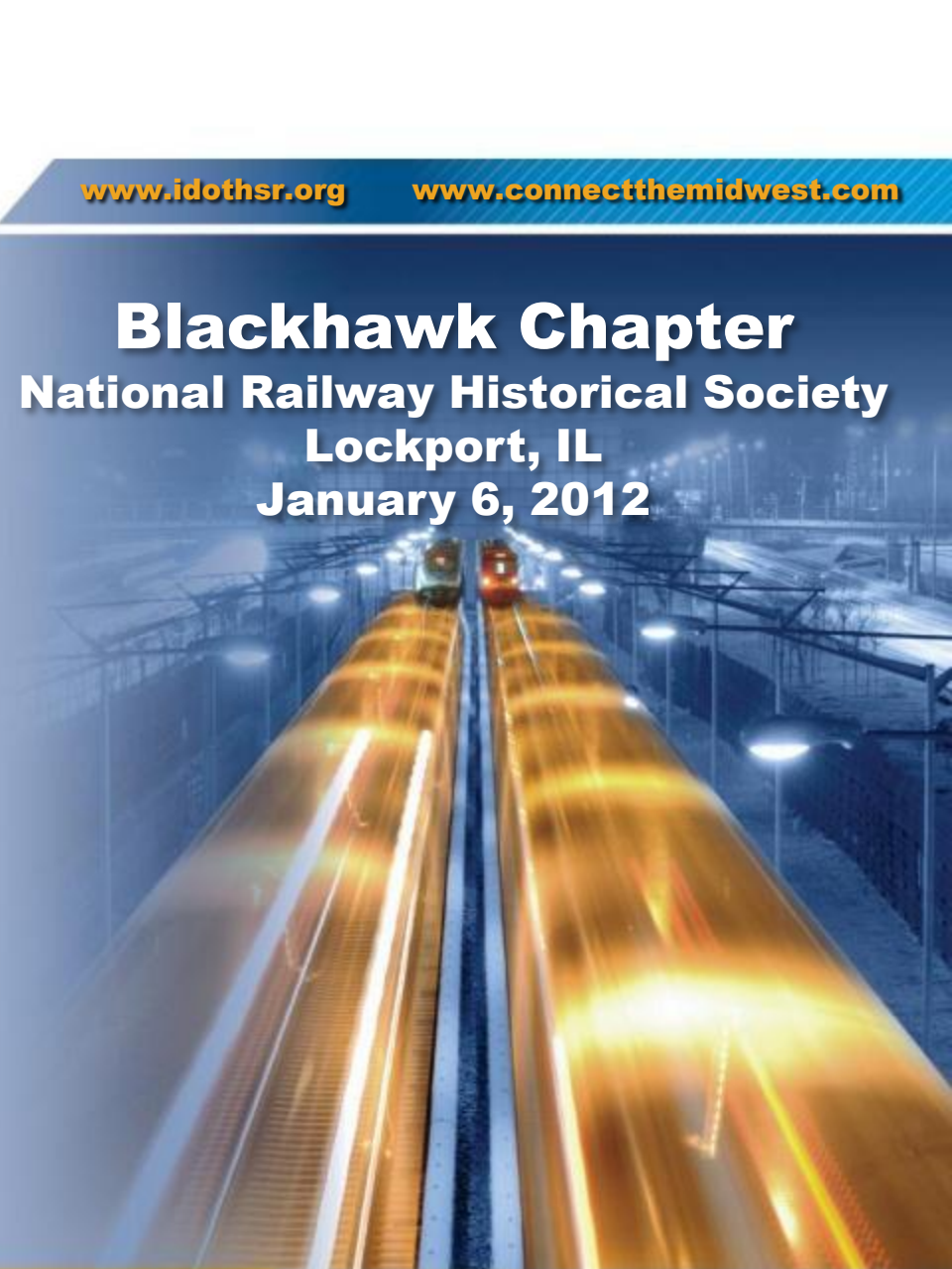
ILLINOIS HIGH-SPEED RAIL

CHICAGO TO ST. LOUIS

Blackhawk Chapter
National Railway Historical Society
Lockport, IL
January 6, 2012



Illinois Department
of Transportation





**ILLINOIS
HIGH-SPEED RAIL**
CHICAGO TO ST. LOUIS

www.idothesr.org

www.connectthemidwest.com

Overview: Chicago to St. Louis Program



Key Program Milestones



2010 - 2012

» Track reconstruction and upgrades

2011

» Procurement process begins for new high-speed rail locomotives and cars

2012

» Operation of trains at higher speeds between Dwight and Pontiac

2014

» Anticipated project completion

Funding Selections

Illinois \$1.2 BILLION*



Record of Decision (ROD)

\$1.1 billion

How will it be spent?

NEW

- Track & Infrastructure - \$570 M
- Cars & Locomotives - \$220 M
- Signaling & Communications - \$170
- Design & Construction Management - \$80 M
- Stations - \$50 M
- Demolition & ROW Purchase - \$50 M

IMPLEMENTATION

- State-of-the-art train control technology

Environmental Impact Statement (EIS)

\$1.25 million

How will it be spent?

- Complete an EIS for a full build-out of the Chicago to St. Louis route.
- Examine alternatives from Chicago to Joliet and Alton to St. Louis.

* CREATE project received \$133M of the Illinois funding allocation.

New Funding Selections



- » The Federal Railroad Administration (FRA) was awarded additional funds as part of the HSIPR program:
 - December 2010- **\$42.3 million** for construction upgrades between Dwight to St. Louis
 - May 2011- **\$268.2 million** to purchase 48 high-performance passenger rail cars and 7 quick-accelerating locomotives for eight corridors in the Midwest
 - Jan 2012- **\$186.3 million** for corridor improvements between Dwight and Joliet





**ILLINOIS
HIGH-SPEED RAIL**
CHICAGO TO ST. LOUIS

www.idothesr.org

www.connectthemidwest.com

2010/2011 Construction



Construction Improvements



- » Installed rail over 187 miles of new track
- » Installed 491,294 new concrete ties
- » Spread 1,042,357 tons of stone ballast
- » Renewed 180 crossing surfaces and approaches
- » Installed 25 switches



Construction: Before & After



Before



After



Construction: Before & After





**ILLINOIS
HIGH-SPEED RAIL**
CHICAGO TO ST. LOUIS

www.idothesr.org

www.connectthemidwest.com

Dwight to Joliet



Dwight to Joliet Summary



- » Construction between Dwight and Joliet is funded by the \$186.3 million awarded in January 2012
- » Project will include:
 - Extension of a second main line track south from Joliet
 - The addition of a new passing siding near Braidwood
 - Upgrades to the entire section to allow for travel up to 110 mph



Dwight to Joliet Summary



» Safety Improvements

- Installation of new premium rail and concrete ties to support higher speed operations
- Fencing will be offered and coordinated with the communities
- Implementation of enhanced signals and crossing warning systems
- Enhanced grade crossing warning: four quadrant gates and pedestrian gates (subject to federal and state approvals)



Dwight to Joliet At-Grade Crossings



- » All public and some private grade crossings will be upgraded to four-quadrant gates with vehicle detection equipment.



Dwight to Joliet At-Grade Crossings



- » For private crossings on farm property, crossings are proposed to receive Field-to-Field Treatment with a locked, reduced access gate system.*

**Both the land owner and Emergency Medical Service will have access to release the locked system when no trains are within the approach circuits.*



Joliet Regional Multi-Modal Transportation Center



Budget: \$39,711,000

Access and connectivity to:

- » Metra rail service
- » Amtrak passenger service
- » Local Pace routes
- » Intercity bus service
- » Taxi service in Downtown Joliet





**ILLINOIS
HIGH-SPEED RAIL**
CHICAGO TO ST. LOUIS

www.idothesr.org

www.connectthemidwest.com

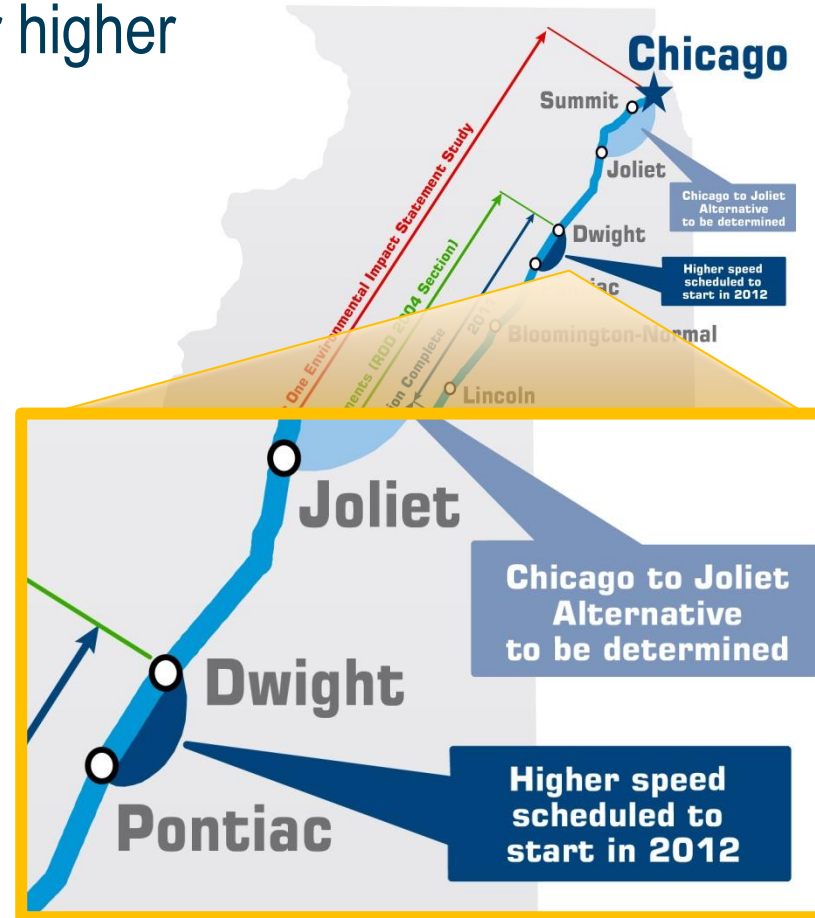
Higher Speed Trains



Coming Soon... *Higher Speeds*



- » **Dwight to Pontiac** Initial segment for higher speed trains
- » **Public Outreach Program**
 - What to expect in your community
 - Educational efforts
 - Safety improvements
- » **Service Reliability & Time Savings**
- » **Environmental Benefits**



Coming Soon... *Higher Speeds*



- » **New high speed train sets** with state of the art coach/business class seating and premium amenities
- » Upgrades to track and new equipment will **raise on-time performance to 85%**
- » **Improved safety** with enhanced grade crossing warnings and signals, and new premium rail and concrete ties





**ILLINOIS
HIGH-SPEED RAIL**
CHICAGO TO ST. LOUIS

www.idothesr.org

www.connectthemidwest.com

Corridor Level Environmental Review (Tier 1 EIS)



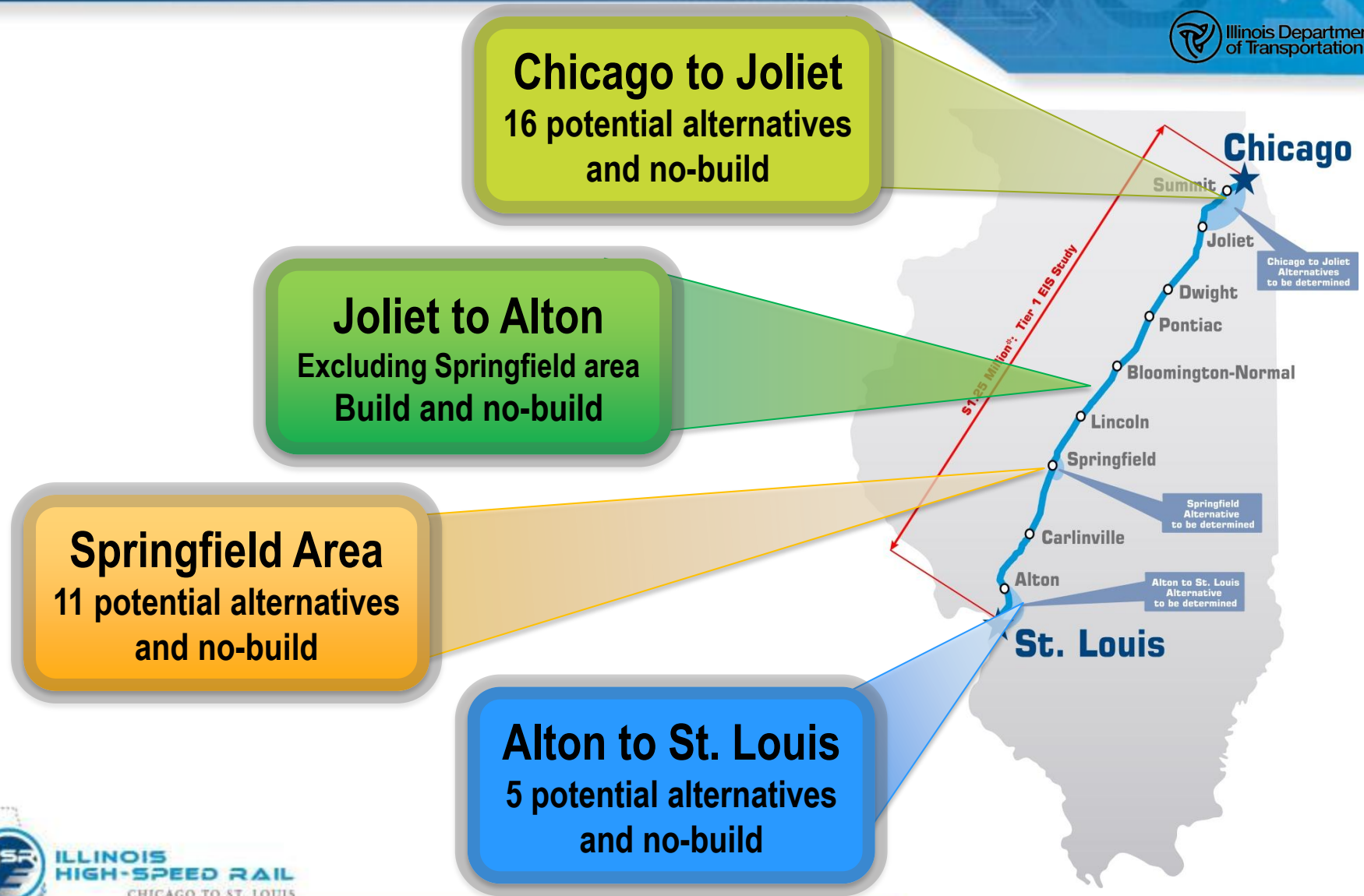
Illinois Department
of Transportation

Environmental Study

- » In early 2011, a corridor level environmental review (Tier 1 EIS) began for the Chicago to St. Louis corridor
- » Study will identify necessary improvements to accommodate higher speed trains and additional daily round trips
- » Public Hearings on the preferred alternatives will be held in March.



Alternatives





**ILLINOIS
HIGH-SPEED RAIL**
CHICAGO TO ST. LOUIS

www.idothesr.org

www.connectthemidwest.com

Other Rail Projects



Chicago to Moline Service Expansion



- » Project will reinstate passenger rail service to the Quad Cities after a 30-year absence.

Chicago to Moline Service Expansion



Chicago to the Quad Cities background:

- » Two round trips per day, at 79 mph, on IAIS, BNSF.
- » Estimated end-to-end runtime of 3 hours 22 min.
- » Total project cost of \$221,600,000:
\$177.28M FRA award, \$44.32M state/local match.
- » FRA Cooperative agreement signed 12/12/11.
- » Service to begin 3rd Quarter of 2015.

Chicago to Moline Service Expansion



What does \$221.6M get us?

- » Upgrade of main track (including Colona Interlocking) on IAIS trackage west of Wyanet connection.
- » Construction of Wyanet connection between IAIS and BNSF.
- » Improvements to BNSF's Eola Yard to minimize passenger, freight, Metra interference.
- » New station in Geneseo, IL and new crew layover facility in Quad Cities.
- » Communications and signal improvements on the IAIS.
- » New equipment procurement for use on corridor: 6 bi-level cars, two café bi-level cars, two bi-level cab cars, and two locomotives, all 110-mph capable.

Chicago to Dubuque via Rockford Service Expansion



Chicago to Dubuque background:

- » One round trip per day, 79 mph, on CN, Amtrak for CUS access.
- » Estimated end-to-end runtime of 5 hours 10 min.
- » Total project budgeted with \$60M in IL Jobs Now! state capital funds; additional \$2.4M in ICC/state funds for crossing safety improvements.
- » Agreement with CN signed; CN to start infrastructure modification analysis this month, design complete in May.
- » Construction to begin in late 2012
- » Service to begin 4rd Quarter of 2014.

Chicago to Milwaukee Improvement – CP Wadsworth Bridges



Wadsworth Bridges background:

- » Project will replace two steel and concrete composite railway bridges on CP/Amtrak *Hiawatha-Empire Builder* route due north of Wadsworth, IL.
- » Bridges are currently at end of useful life and being monitored for speed restrictions. Upgrades are designed for 110-mph capability.
- » Total project cost of \$7,421,920:
\$3,710,960 FRA award, \$3,710,960 Canadian Pacific match.
- » FRA Cooperative agreement signed 8/1/11.
- » Final design nearing completion, construction slated for June to December 2012.

CREATE Program “P1” Englewood Flyover



- » \$133M project at 63rd St./State St. in Englewood neighborhood, south side of Chicago.
- » Project is a rail-rail flyover of the Metra Rock Island and Norfolk Southern-Chicago lines that currently meet at grade level.
- » Project will eliminate conflict between:
 - 78 daily Metra commuter trains;**
 - 14 daily Amtrak trains** between Chicago and points east; and
 - 46 daily NS freight trains.**



CREATE program “P1” Englewood Flyover



Current Status:

- » Agreements are now in place among FRA, Metra, Norfolk-Southern, and IDOT.
- » Construction scheduled to start in spring 2012.
- » Expected completion in 2014.



Looking west on NS



**ILLINOIS
HIGH-SPEED RAIL**
CHICAGO TO ST. LOUIS

www.idothesr.org

www.connectthemidwest.com

Public Involvement



Illinois Department
of Transportation

Public Involvement Opportunities



Stakeholder Outreach

Public Meetings &
Hearings

Stakeholder
Meetings/Briefings

Small Group
Meetings

Media Outreach

Fact Sheets

Project Website:
www.idot-hsr.org

Project Hotline: 1-855-IDOT-HSR

Get Your Information from the Source



» For additional information:

- Visit www.idothsr.org for more project specific information, business opportunities, and to comment on the Illinois High-Speed Rail project
 -  Visit us at <http://www.facebook.com/illinoishighspeedrail>

- Visit www.connectthemidwest.com for Midwest High-Speed Rail information.
 -  Visit us at <http://www.facebook.com/MidwestHighSpeedRail>
 -  Visit us at <http://twitter.com/MWHighSpeedRail>

- Project Hotline **1-855-IDOT-HSR (436-8477)**.



Business Opportunities/Doing Business



For Business Opportunities:

- » Visit the **Doing Business** section of www.idothsr.org.
- » Find details about the bidding process and current business opportunities
- » Find related links for detailed procedures

The screenshot shows the 'Doing Business' section of the Illinois High-Speed Rail website. The page includes a navigation menu with 'Doing Business' selected. Below the menu, there is a 'Doing Business' heading, a 'Bidding Process' link, and a 'See More...' section with 'photos' and 'videos' buttons. A large image of train tracks is visible, and a 'Bidding Process' section contains text about the bidding process and the Disadvantaged Business Enterprises (DBE) program.



**ILLINOIS
HIGH-SPEED RAIL**
CHICAGO TO ST. LOUIS

www.idothesr.org

www.connectthemidwest.com

Questions?



Illinois Department
of Transportation

Get Your Information from the Source



» For additional information:

- Visit www.idothsr.org for more project specific information, business opportunities, and to comment on the Illinois High-Speed Rail project
 -  Visit us at <http://www.facebook.com/illinoishighspeedrail>

- Visit www.connectthemidwest.com for Midwest High-Speed Rail information.
 -  Visit us at <http://www.facebook.com/MidwestHighSpeedRail>
 -  Visit us at <http://twitter.com/MWHighSpeedRail>

- Project Hotline **1-855-IDOT-HSR (436-8477)**.

