

Welcome!

**ELECTED /
LOCAL OFFICIALS
MEETING**



**Illinois Department
of Transportation**

**ILLINOIS
HIGH-SPEED
RAIL**

CHICAGO TO ST. LOUIS

Station Improvements

EXPERIENCE IT YOURSELF.



**ILLINOIS
HIGH-SPEED RAIL**
CHICAGO TO ST. LOUIS



www.idothesr.org

Program Schedule

EXPERIENCE IT YOURSELF.

2010-2012

- Track reconstruction and upgrades

2012

- Procurement process for new high-speed rail cars
- Operation of trains up to 110 mph between Dwight and Pontiac

2013

- Procurement process for new high-speed rail locomotives

2015

- Significant infrastructure improvements in place to support speeds of up to 110 mph on the Joliet-Carlinville portion of the corridor
- Initial reductions in travel time

2015-2017

- Infrastructure improvements complete with increased speeds over entire Joliet-East St. Louis segment
- Travel time reduced by about an hour
- Springfield Third St. improvements
- Delivery of the new cars and new locomotives



**ILLINOIS
HIGH-SPEED RAIL**
CHICAGO TO ST. LOUIS



www.idothsr.org

Program Benefits

EXPERIENCE IT YOURSELF.



Safety



New Passenger Cars & Locomotives



Stations



Economic & Community



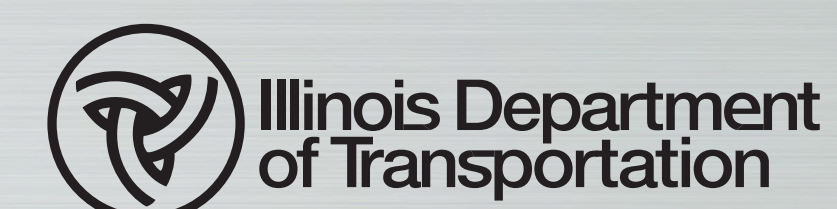
Environmental



Service Reliability & Time Savings



ILLINOIS
HIGH-SPEED RAIL
CHICAGO TO ST. LOUIS



www.idothesr.org

Illinois Commerce Commission: Railroad Safety

EXPERIENCE IT YOURSELF.

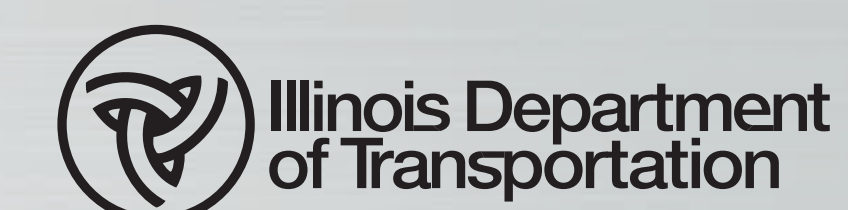
- ✓ **Has the statutory responsibility to improve safety at public highway-rail crossings**
- ✓ **Orders safety improvements at public highway-rail crossings with the cost of such improvements paid by the state, the railroads, and local governments.**

**Improvements
typically suggested
by the ICC include
the following:**

- Warning Device Upgrades
- Grade Separations -
New and Reconstructed
- Grade Separations -
Vertical Clearance Improvements
- Pedestrian Grade Separations
- Interconnects
- Highway Approaches
- Connecting Roads
- Remote Monitoring Devices
- Low Cost Improvements at
Unsignalized Crossings
- Crossing Closures
- New Grade Crossings
(Roadway and Pedestrian)



**ILLINOIS
HIGH-SPEED RAIL**
CHICAGO TO ST. LOUIS



www.idothsr.org

Track Renewal Train

EXPERIENCE IT YOURSELF.

- > Install rail and concrete ties in one pass
- > Consists of approximately 30 rail cars, with each car capable of carrying 210 concrete ties
- > Wooden ties are picked up, and discarded rail is threaded out as the machine works its way down the track
- > Upgrade utilizing continuous welded rail, concrete ties and stone track ballast



**ILLINOIS
HIGH-SPEED RAIL**
CHICAGO TO ST. LOUIS

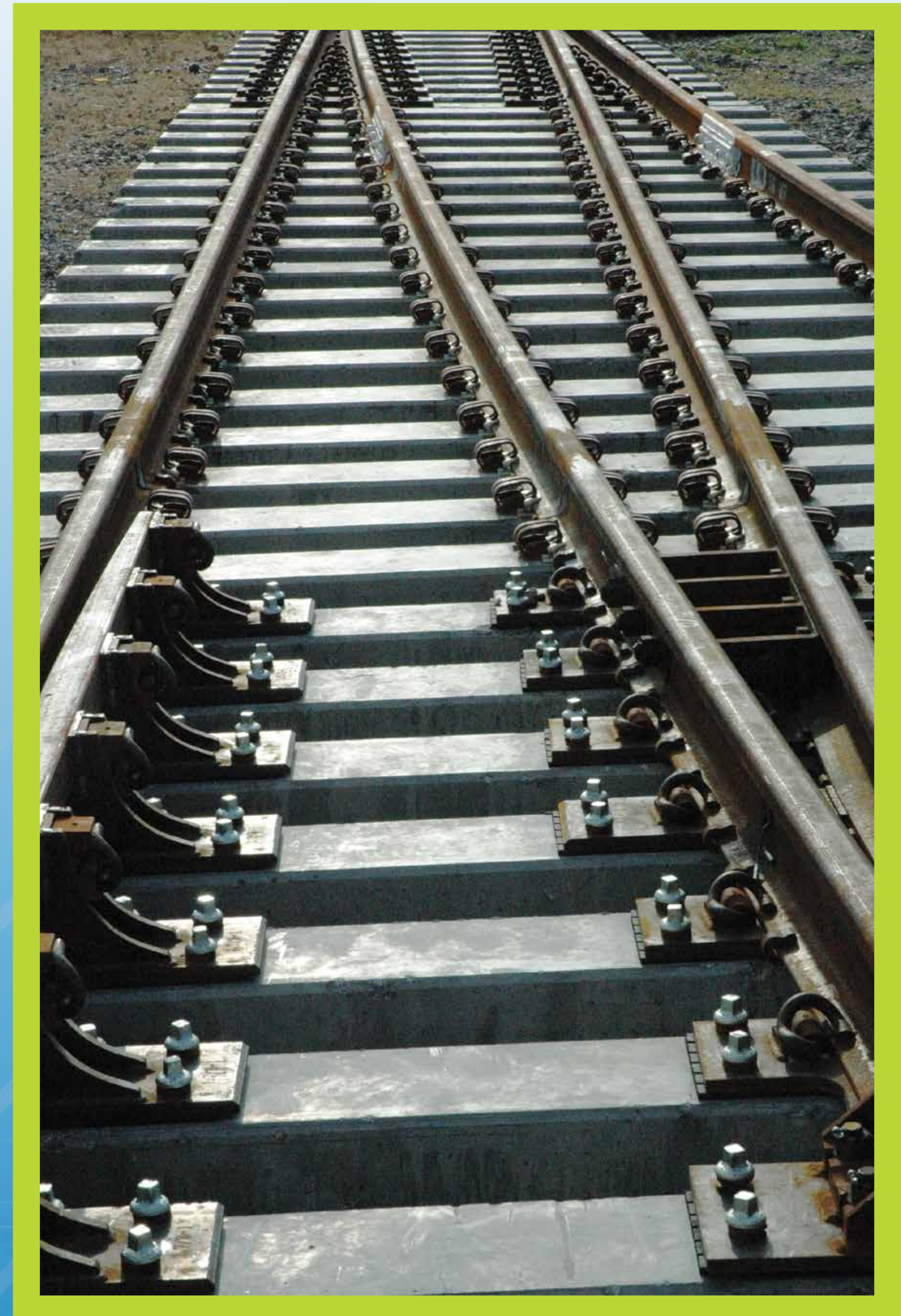


www.idothsr.org

The TRT 909 machine

EXPERIENCE IT YOURSELF.

- > *Nearly 50 pieces of equipment are used within a TRT project.*
- > *The TRT and accompanying equipment can extend over six miles in length.*
- > *Multiple Union Pacific crews will perform a variety of functions to ensure its safe and efficient operation.*
- > *All materials removed from the work sites is recycled or reused.*



Track Renewal Train (TRT)

EXPERIENCE IT YOURSELF.



- > ***In 2014, the work will be completed between Madison and E. Alton.***
- > ***This is the final round of TRT work for the Illinois High-Speed Rail Program.***



ILLINOIS
HIGH-SPEED RAIL
CHICAGO TO ST. LOUIS



www.idothsr.org

Public Involvement

EXPERIENCE IT YOURSELF.

Get Involved!



- *Public Meetings*
- *Small Group Meetings*
- *Program Fact Sheets*
- *Visit www.idothsr.org for more information or to comment on the Illinois High-Speed Rail Program*
- *1-855-IDOT-HSR (436-8477)*



www.facebook.com/illinoishighspeedrail



**ILLINOIS
HIGH-SPEED RAIL**
CHICAGO TO ST. LOUIS



www.idothsr.org

Business Opportunities

EXPERIENCE IT YOURSELF.

For information regarding business and job opportunities, please visit the **DOING BUSINESS SECTION** of the project website at

<http://www.idothsr.org/business/>



ILLINOIS
HIGH-SPEED RAIL
CHICAGO TO ST. LOUIS



www.idothsr.org