

EXPERIENCE IT YOURSELF.



**ILLINOIS
HIGH-SPEED
RAIL**

CHICAGO TO ST. LOUIS



ISPE
Future Engineer
Night

April 24, 2014

EXPERIENCE IT YOURSELF.



Illinois High-Speed Rail Chicago to St. Louis Program



**ILLINOIS
HIGH-SPEED
RAIL**

CHICAGO TO ST. LOUIS



www.idothsr.org

Chicago-St. Louis Corridor

EXPERIENCE IT YOURSELF.



- » IDOT has actively developed the corridor since the mid 1980's
- » Federally designated a High-Speed Rail corridor in 1992
- » Previously completed Environmental Studies



**ILLINOIS
HIGH-SPEED RAIL**
CHICAGO TO ST. LOUIS

» Public Operation of Higher-Speed Service between Dwight and Pontiac

- Began November 22, 2012
- Three northbound (300, 302, and 304) and three southbound (301, 305, and 307) trains



Benefits

EXPERIENCE IT YOURSELF.

- » *Enhanced Service and Reliability*
- » *New Passenger Cars and Locomotives*
- » *New/Rehabilitated Stations*
- » *Less Damage to the Environment*
- » *Safety Improvements*



EXPERIENCE IT YOURSELF.



Safety Improvements



**ILLINOIS
HIGH-SPEED
RAIL**

CHICAGO TO ST. LOUIS



Illinois Department
of Transportation

www.idothsr.org

Construction: Before & After

EXPERIENCE IT YOURSELF.



Construction: Before & After

EXPERIENCE IT YOURSELF.



Before



After

09/18/2010

Bridge Upgrades

EXPERIENCE IT YOURSELF.

- » Improve structural integrity and stability of existing bridges



Equipment

EXPERIENCE IT YOURSELF.

- » Joint procurement with multiple states
- » New passenger cars
 - Accessible, car-borne lifts
- » New locomotives (125 mph capability)



**ILLINOIS
HIGH-SPEED RAIL**
CHICAGO TO ST. LOUIS



www.idothsr.org

Station Improvements

EXPERIENCE IT YOURSELF.

» Joliet

- Received a discretionary grant to construct a multi-modal facility and to make safety improvements
- Two of three construction phases are underway; design work continues

» Dwight

- Proposed site south of the current location on Village property
- Plans in the design phase
- Categorical exclusion complete



» Pontiac

- Proposed site southwest of the existing station on City property
- Categorical exclusion almost complete
- Plans in the design phase

Station Improvements

EXPERIENCE IT YOURSELF.



» Normal

- New multi-modal facility opened in July 2012
- Funded with a Transportation Investments Generating Economic Recovery (TIGER) grant
- Second platform and passenger grade separation to be built using High-Speed Rail (HSR) funding
- Improvements in the design phase

» Lincoln

- Plans for upgrades in the conceptual design phase
- Categorical exclusion complete

» Springfield

- Plans for upgrades in the design phase

Station Improvements

EXPERIENCE IT YOURSELF.

» Carlinville

- Proposed site near the current facility
- Plans in the design phase

» Alton

- Environmental Assessment (EA) completed
- Selected to receive TIGER grant funding
- Will integrate a new IDOT HSR station and a multi-modal facility (in conceptual design phase)



EXPERIENCE IT YOURSELF.



Railroad Safety at Grade Crossings



**ILLINOIS
HIGH-SPEED
RAIL**

CHICAGO TO ST. LOUIS



www.idothsr.org

Railroad Safety

EXPERIENCE IT YOURSELF.



**ILLINOIS
HIGH-SPEED RAIL**
CHICAGO TO ST. LOUIS



www.idothsr.org

Railroad Safety

EXPERIENCE IT YOURSELF.



**ILLINOIS
HIGH-SPEED RAIL**
CHICAGO TO ST. LOUIS



www.idothsr.org

Railroad Safety

EXPERIENCE IT YOURSELF.



**ILLINOIS
HIGH-SPEED RAIL**
CHICAGO TO ST. LOUIS

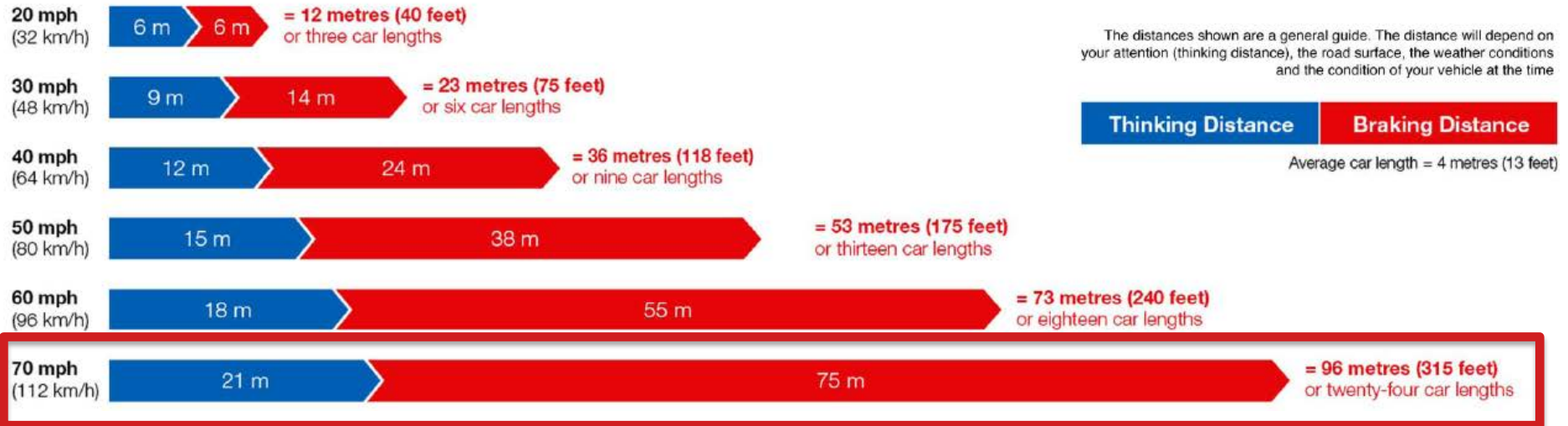


www.idothsr.org

Railroad Safety

EXPERIENCE IT YOURSELF.

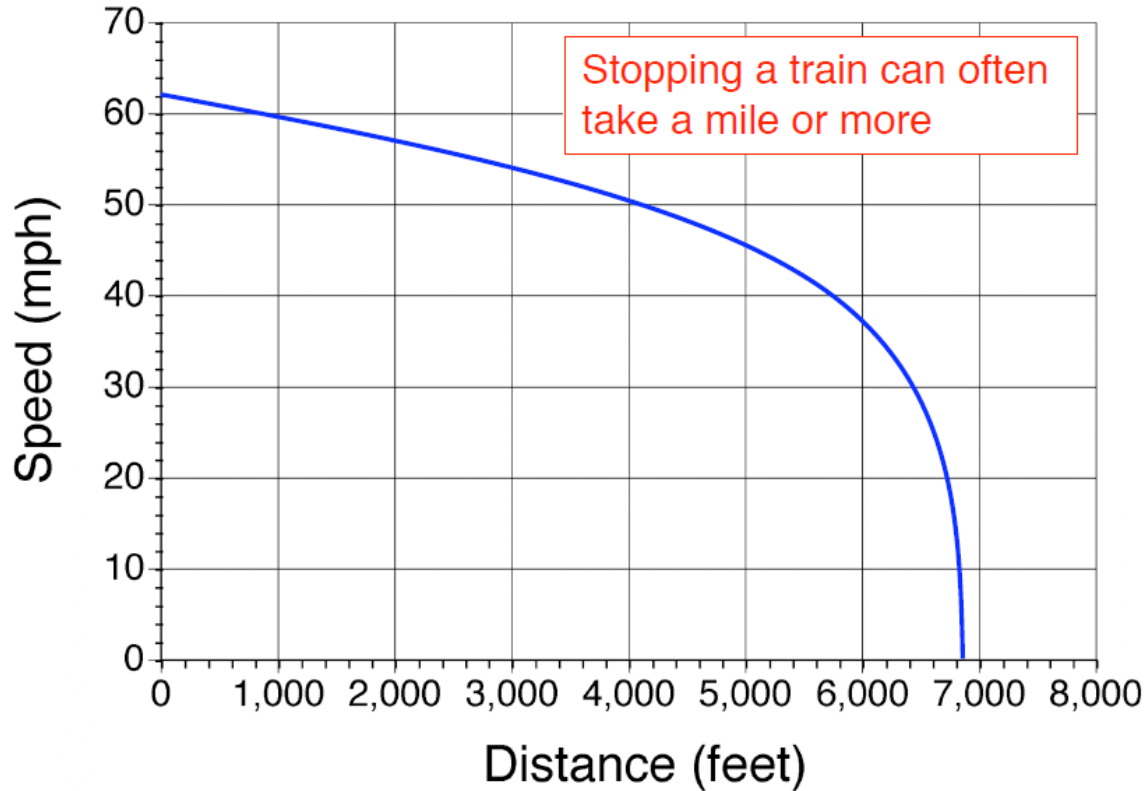
Typical Stopping Distances



It takes about 300 feet, or three lengths of a football field to bring a car from 70 mph to a stop
A train travelling at the same speed needs a little more...

Railroad Safety

EXPERIENCE IT YOURSELF.



Grade Crossings



4 Quadrant Gates

EXPERIENCE IT YOURSELF.



Public and Private Crossings

EXPERIENCE IT YOURSELF.



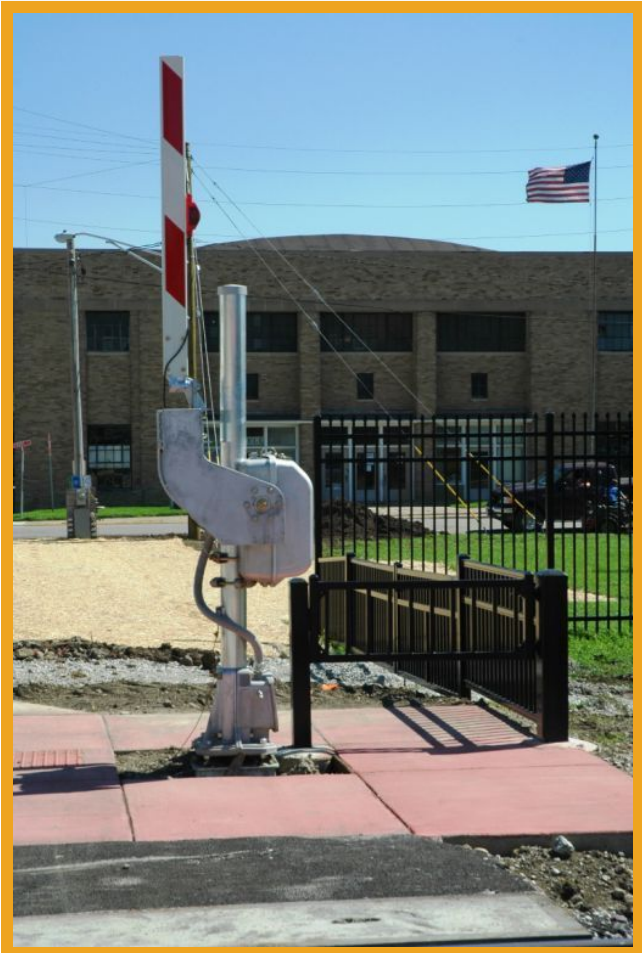
Right-of-Way Fencing

EXPERIENCE IT YOURSELF.



Pedestrian Gates

EXPERIENCE IT YOURSELF.



Railroad Safety

EXPERIENCE IT YOURSELF.

- » Anytime is train time
- » Obey crossing warnings, even if you do not see a train approaching
- » A train cannot stop as fast as a car

EXPERIENCE IT YOURSELF.



Public Involvement



**ILLINOIS
HIGH-SPEED
RAIL**

CHICAGO TO ST. LOUIS



Illinois Department
of Transportation

www.idothsr.org

Public Involvement Opportunities

EXPERIENCE IT YOURSELF.

Stakeholder Outreach

Small Group Meetings

Local Festivals

Project Website
www.idothsr.org

Fact Sheets



**ILLINOIS
HIGH-SPEED RAIL**
CHICAGO TO ST. LOUIS

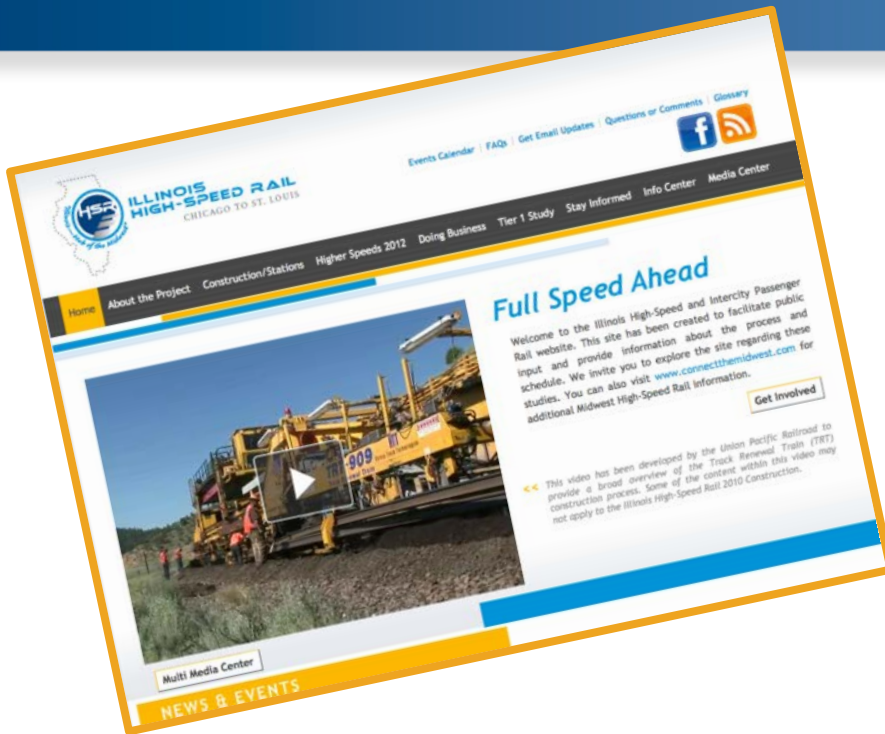


www.idothsr.org

27

Get Your Information from the Source

EXPERIENCE IT YOURSELF.



www.idothsr.org



<http://www.facebook.com/illinoishighspeedrail>

Project Hotline
1-855-IDOT-HSR (436-8477)

EXPERIENCE IT YOURSELF.

Questions



**ILLINOIS
HIGH-SPEED
RAIL**

CHICAGO TO ST. LOUIS



www.idothsr.org

EXPERIENCE IT YOURSELF.



Thank You



**ILLINOIS
HIGH-SPEED
RAIL**

CHICAGO TO ST. LOUIS



Illinois Department
of Transportation

www.idothsr.org