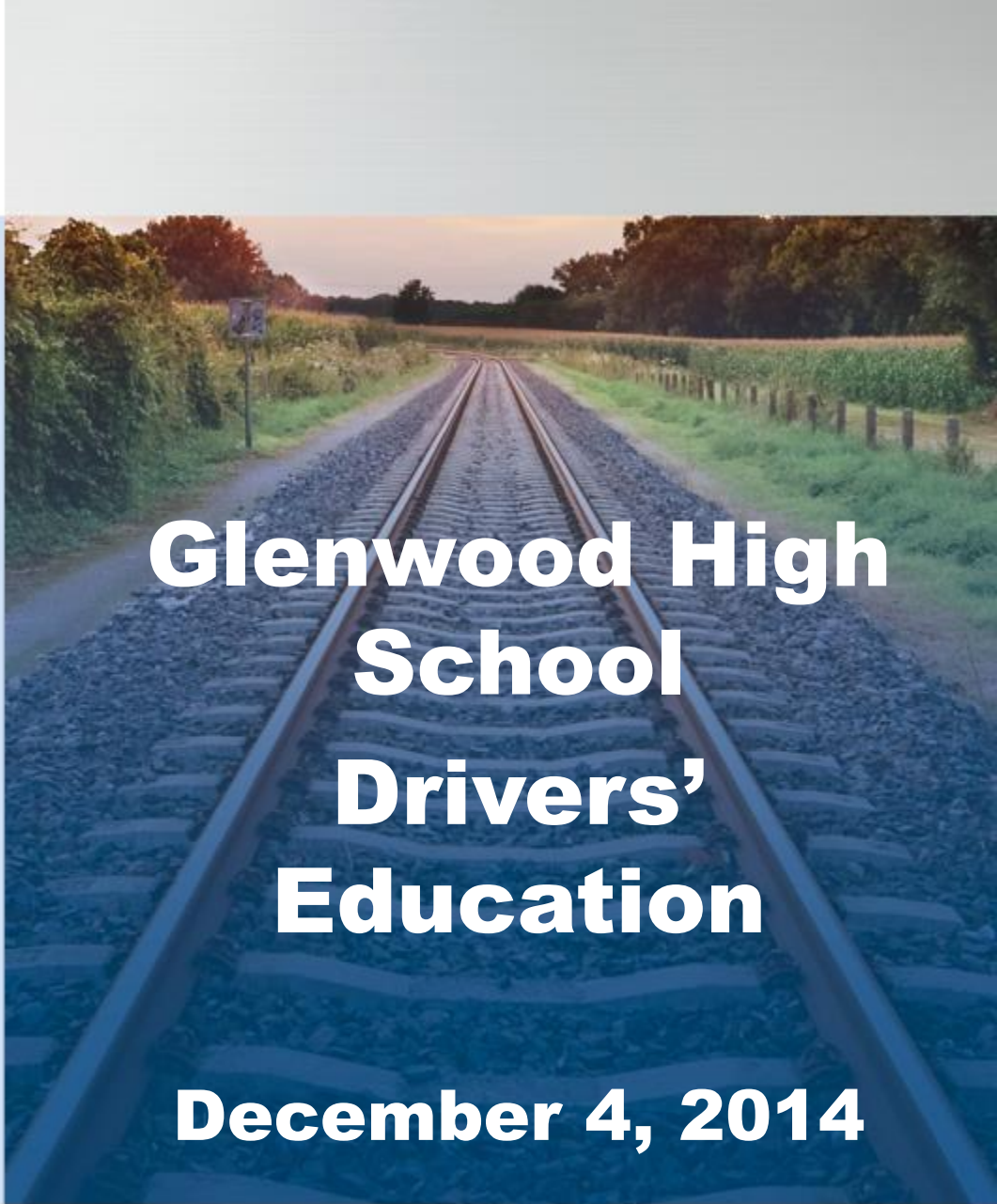


EXPERIENCE IT YOURSELF.



**ILLINOIS
HIGH-SPEED
RAIL**

CHICAGO TO ST. LOUIS



Glenwood High School Drivers' Education

December 4, 2014

EXPERIENCE IT YOURSELF.

Illinois High-Speed Rail Chicago to St. Louis Program



**ILLINOIS
HIGH-SPEED
RAIL**

CHICAGO TO ST. LOUIS



Illinois Department
of Transportation

www.idothsr.org

Chicago-St. Louis Corridor Benefits

EXPERIENCE IT YOURSELF.



- » **Reduction in travel time by about an hour**
- » **Enhanced reliability**
- » **New passenger cars and locomotives**
- » **New/rehabilitated stations**
- » **Safety improvements**



**ILLINOIS
HIGH-SPEED RAIL**
CHICAGO TO ST. LOUIS



www.idothsr.org

Construction: Before & After

EXPERIENCE IT YOURSELF.



Before



After



4 Quadrant Gates

EXPERIENCE IT YOURSELF.



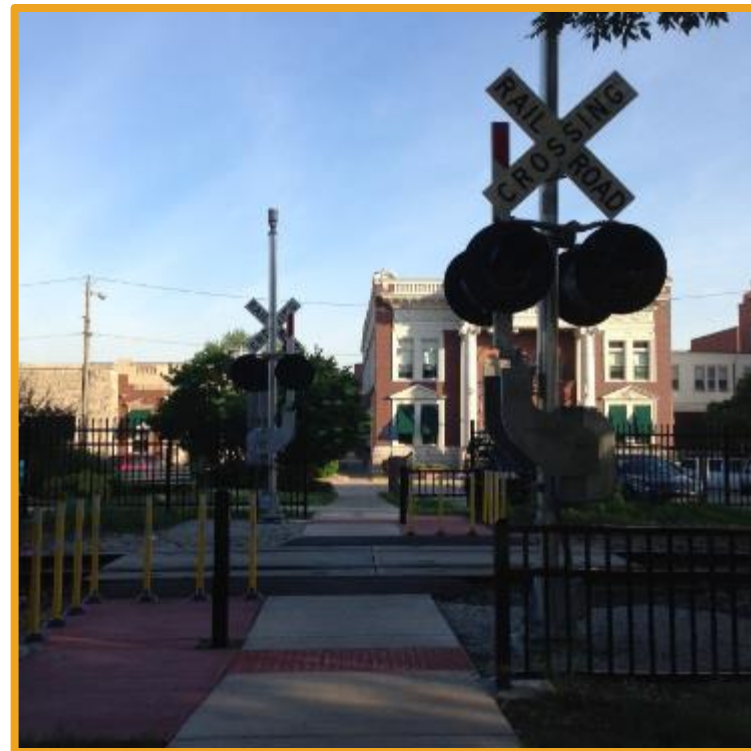
Public and Private Crossings

EXPERIENCE IT YOURSELF.



Pedestrian Gates

EXPERIENCE IT YOURSELF.



Equipment

- » Joint procurement with multiple states
- » New passenger cars
 - Accessible, car-borne lifts
- » New locomotives (125 mph capability)



Station Improvements

EXPERIENCE IT YOURSELF.

» Springfield

- **Plans for upgrades in the design phase**
- **ADA Accessibility Enhancements:**
 - **Platform**
 - **Parking Facilities**
 - **Entrances and Exits**
 - **Washroom Facilities**



EXPERIENCE IT YOURSELF.

Safety



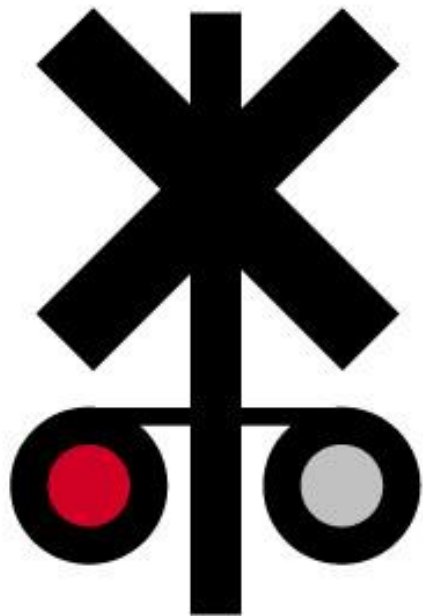
**ILLINOIS
HIGH-SPEED
RAIL**

CHICAGO TO ST. LOUIS



Illinois Department
of Transportation

www.idothsr.org



OPERATION LIFESAVER[®]

Look, Listen & Live

Railroad Safety Information for Glenwood High School



STAY OFF
STAY AWAY
STAY ALIVE



**OPERATION
LIFESAVER®**

Look, Listen & Live

The 3 E's of Operation Lifesaver

EDUCATION
ENGINEERING
ENFORCEMENT

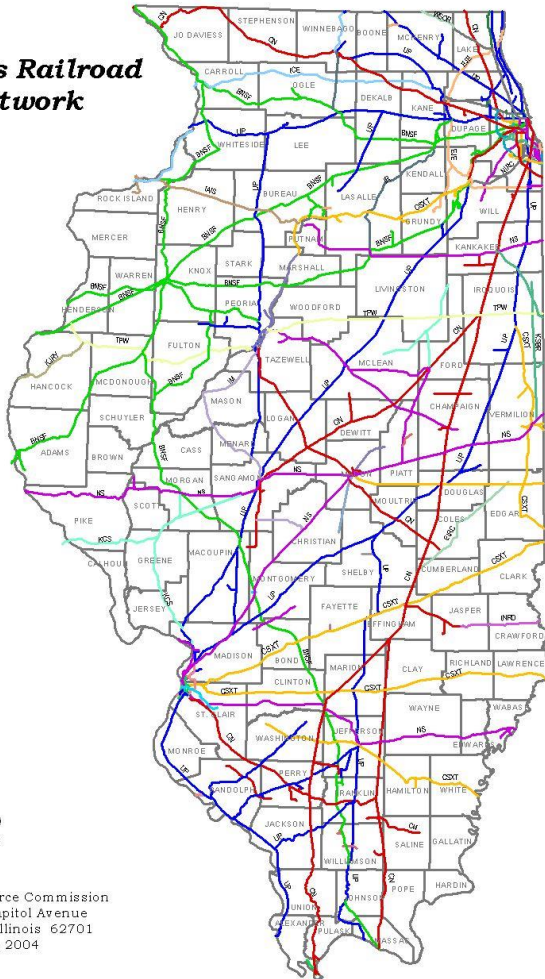
Any Time is Train Time



Illinois - High Density Railroad Traffic

Illinois Railroad Network

Rail Lines
ALS
BLOL
BNSF
BRC
BSDA
CCGZ
CCRZ
CN
COER
CP
CFL
CSL
CSSS
CSXT
CTML
DT
EPRF
EIRC
EJE
EJIS
ICE
IEB
IM
INRD
IR
KASK
KCS
KJRY
KSBF
LIRR
LS
LSBC
MJ
MRMZ
NIRC
NS
PPU
SIRS
TFW
TRFA
UP
VRRF
WSOR



- Nation's largest rail hub
- 50 Railroads/1,500 Trains
- Illinois ranks second only to Texas in the number of public crossings (7,795) and track miles (7,200).
- Texas is 4.5 times the size of Illinois in total square miles (261,000 to 55,500).
- Higher concentration of crossings, trains and population. More risk exposure.

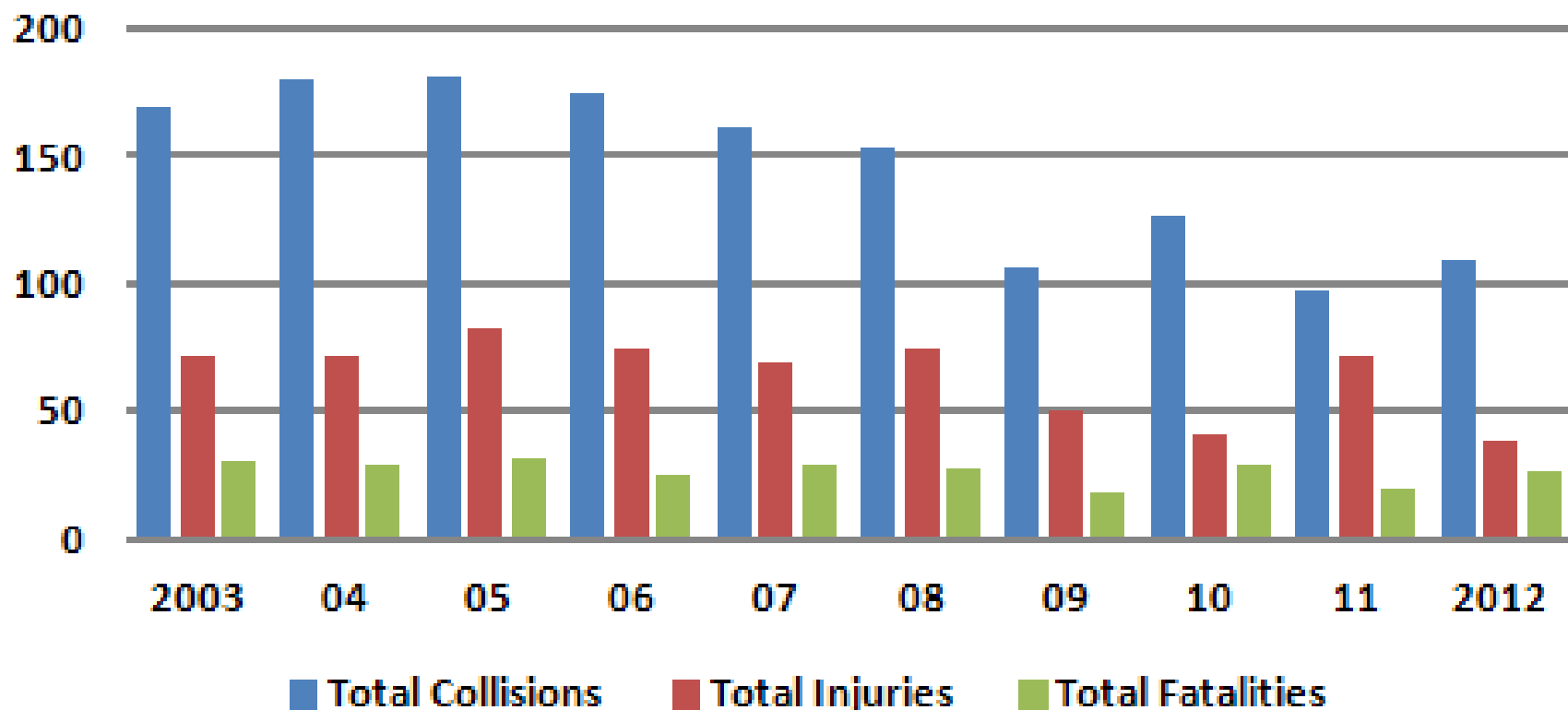
94% of all crashes are driver error

(June 2004 DOT Hwy-Rail Grade Crossing Safety Program Report)



Grade Crossing Collisions 2003-2012

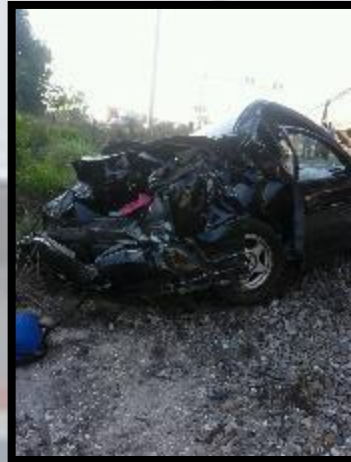
**Collisions, Injuries & Fatalities at Highway-Rail
Grade Crossings: 2003 - 2012**



The Average Illinois Collision

- Clear **DECEMBER** day 5:00-6:00pm
- Freight train traveling 40-49mph vs. car
- Male 20-29 years old
- Disregarded active warning devices
- Roadway has less than 1000 cars per day. Crossing experiences 2-9 trains each day.

Car vs. Train Crashes



Weight Ratio



=



150 Tons vs. One Ton



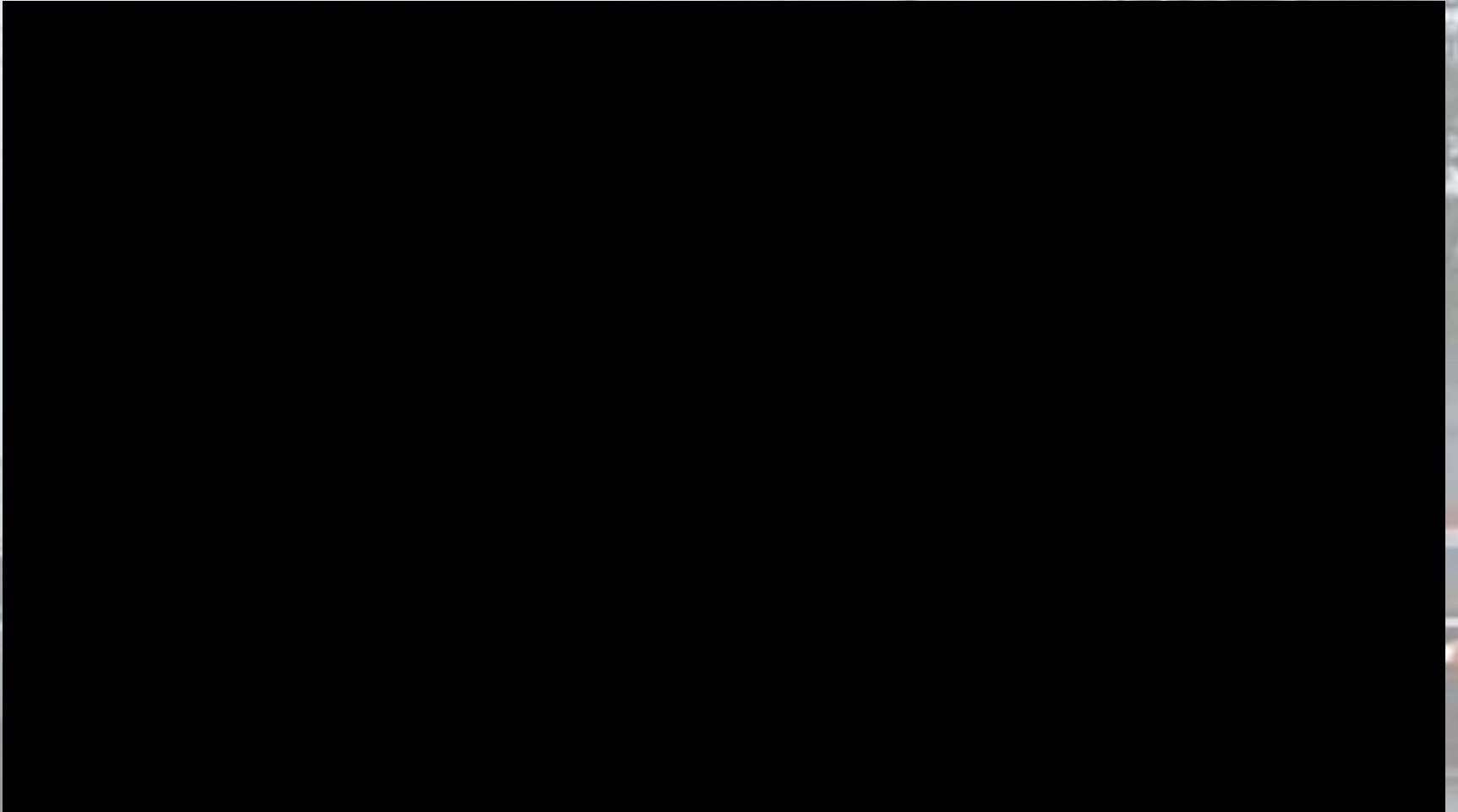
**25% of crashes involve
driving into the side of the train**



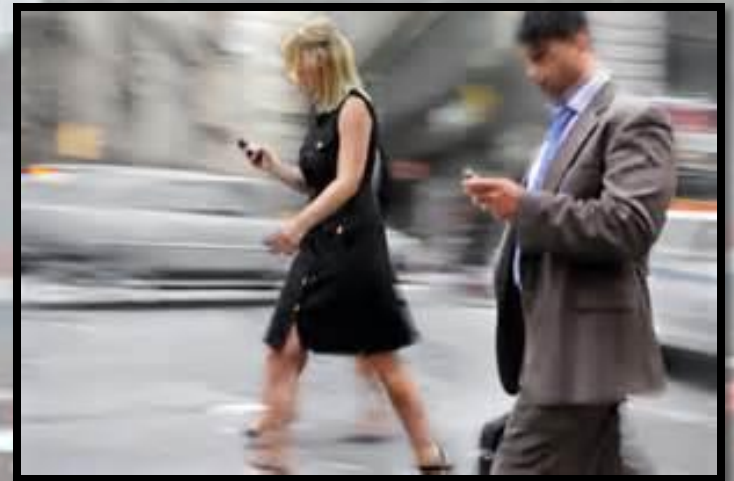
3/4 of those occur during daylight hours



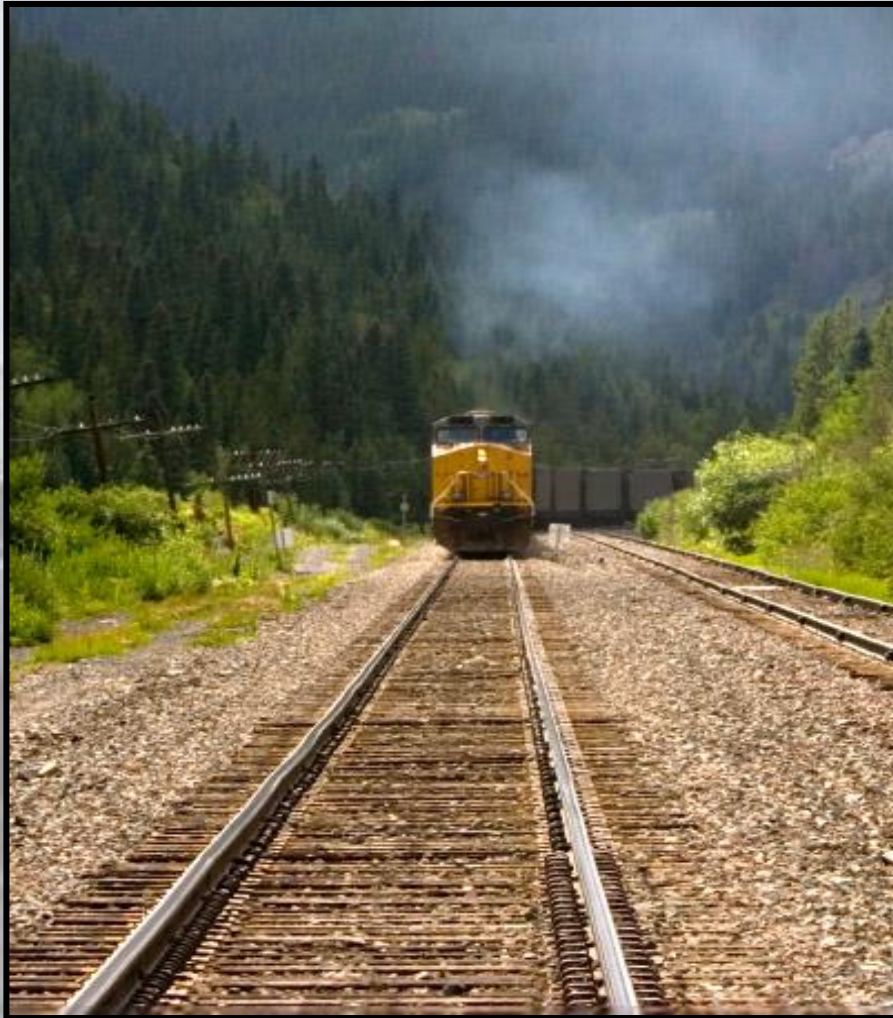
Distractions



Texting and Trains ... Don't Mix



Speed Perception



Speed of an Approaching Train (Optical Illusion)

**Slow moving Freight Train at
10 MPH**



**Amtrak Train traveling at up to
110 MPH**



Approximate Stopping Distance

At 55 MPH



200 Ft



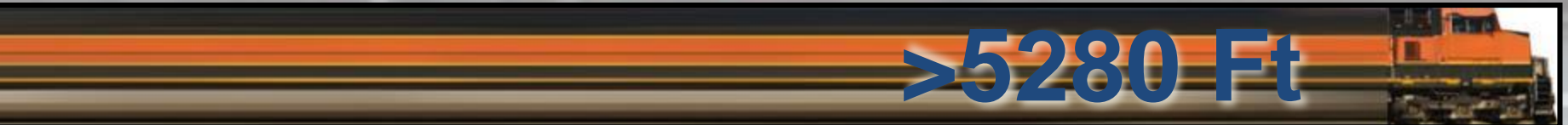
230 Ft



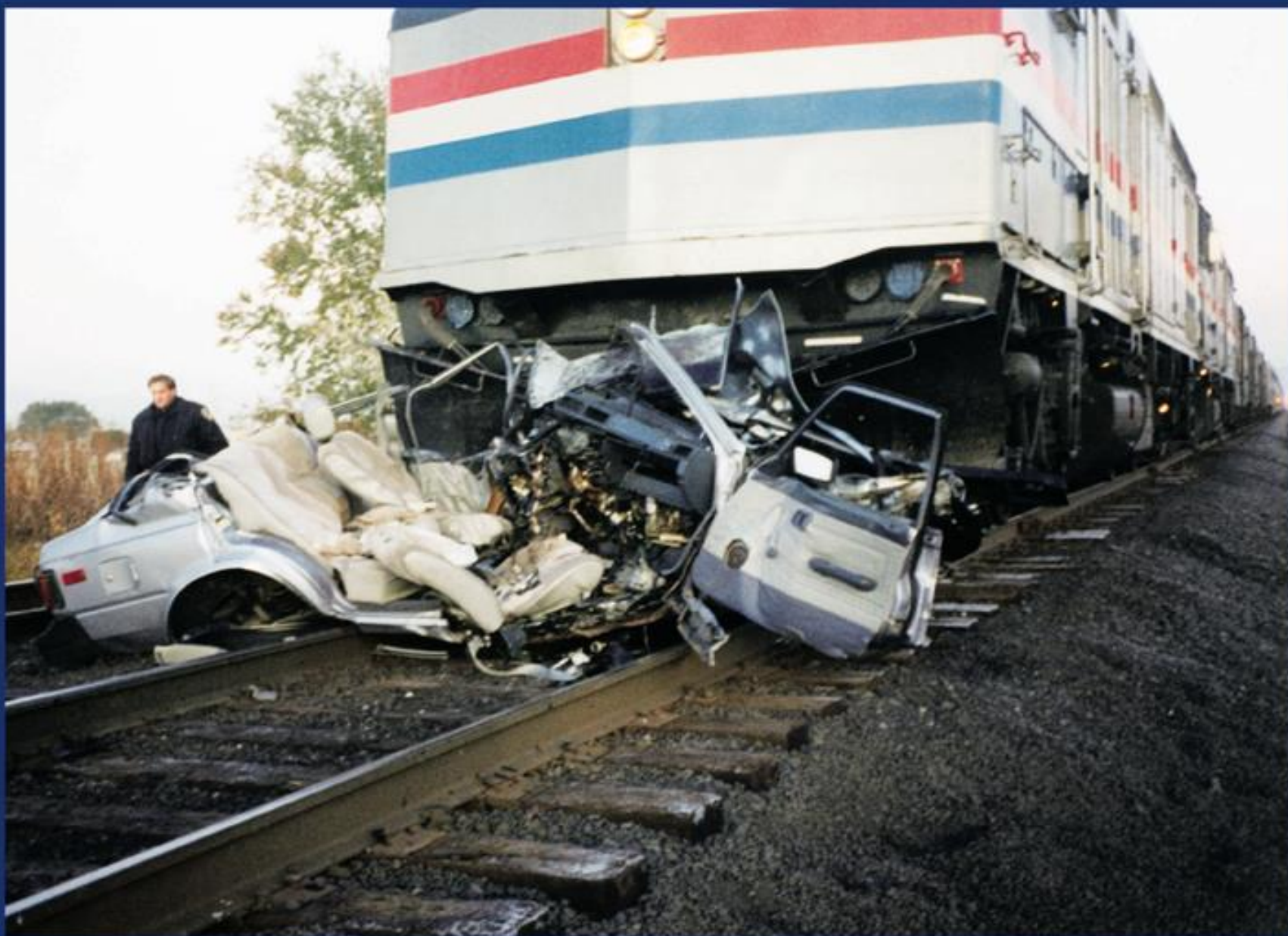
300 Ft



600 Ft



>5280 Ft



Trains Can't Swerve



Trains run on tracks. Stay out of their path. Nothing bad will happen.



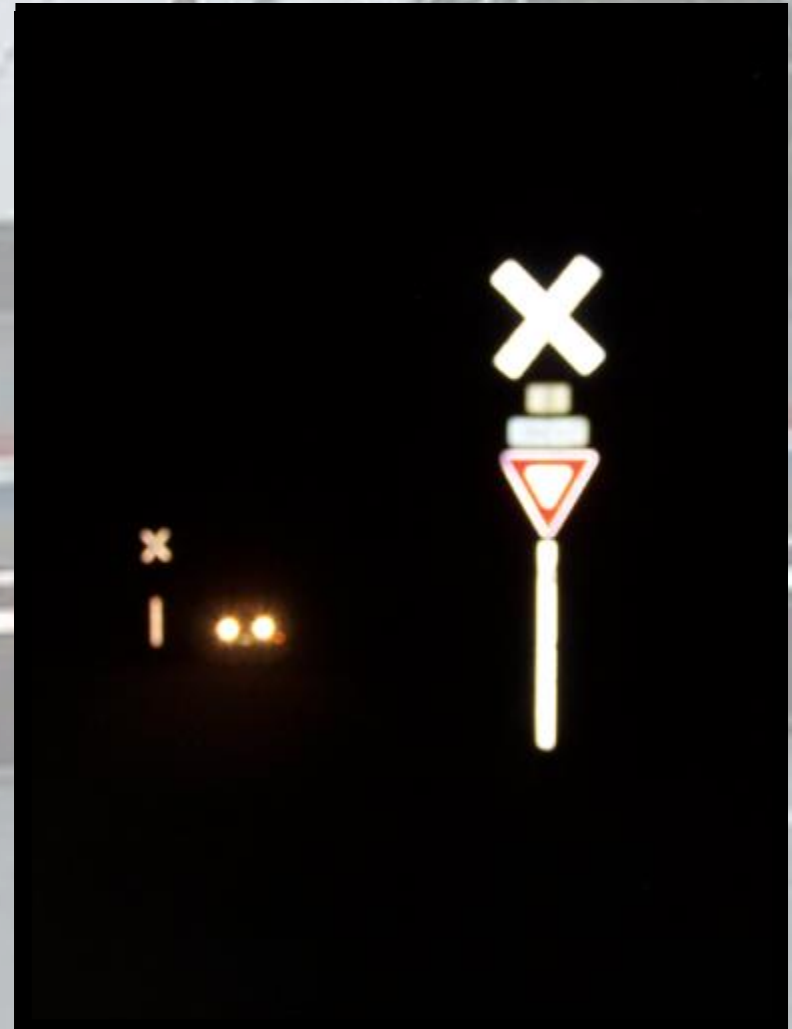
Railroad Signs of Life.....



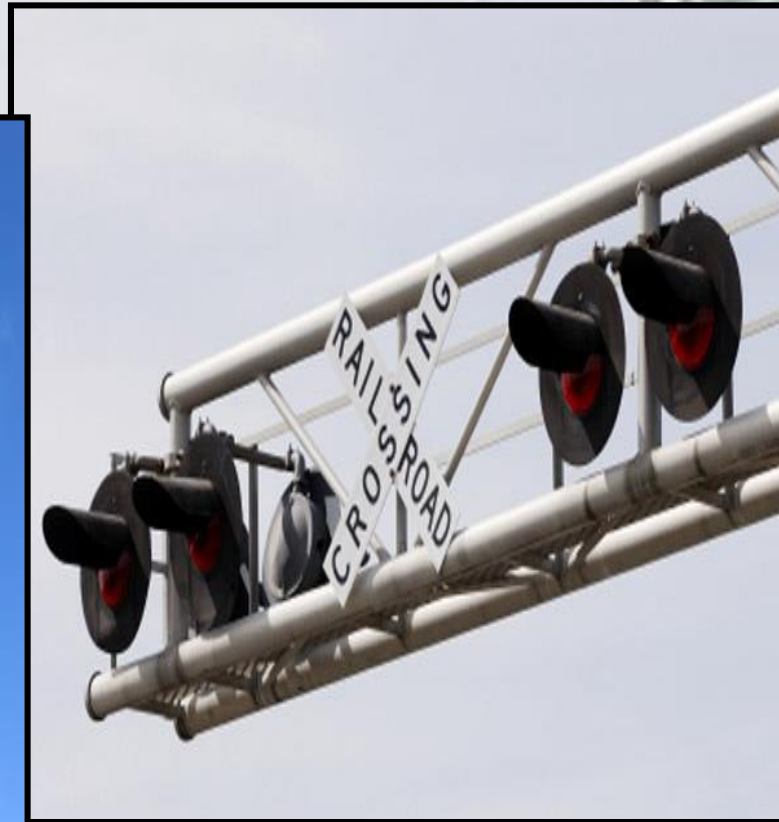


RAILROAD
CROSSING

Passive Sign Means Yield



Active Warning Devices



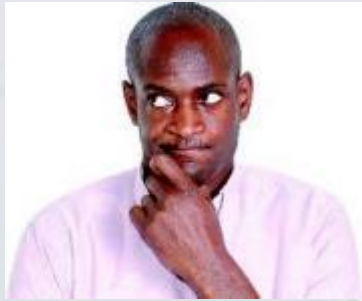
Flashing Red Lights Mean Stop
(Longer approach time, but same waiting time)



Flashing Red Lights Mean Stop
(Gates fully descended in min. of 20 seconds)



Don't even think about it....



Gate Violations



Head End Cameras will see you.



Officer on a train- Enforcement



Emergency Notification System

**TO REPORT STALLED
VEHICLE ON TRACKS OR
OTHER EMERGENCY
CALL 1-800-555-5555
AND REFER TO
CROSSING #123-123A
ON CHERRY STREET**



New Standard Sign for All Crossings



Provide the information listed on that sign.

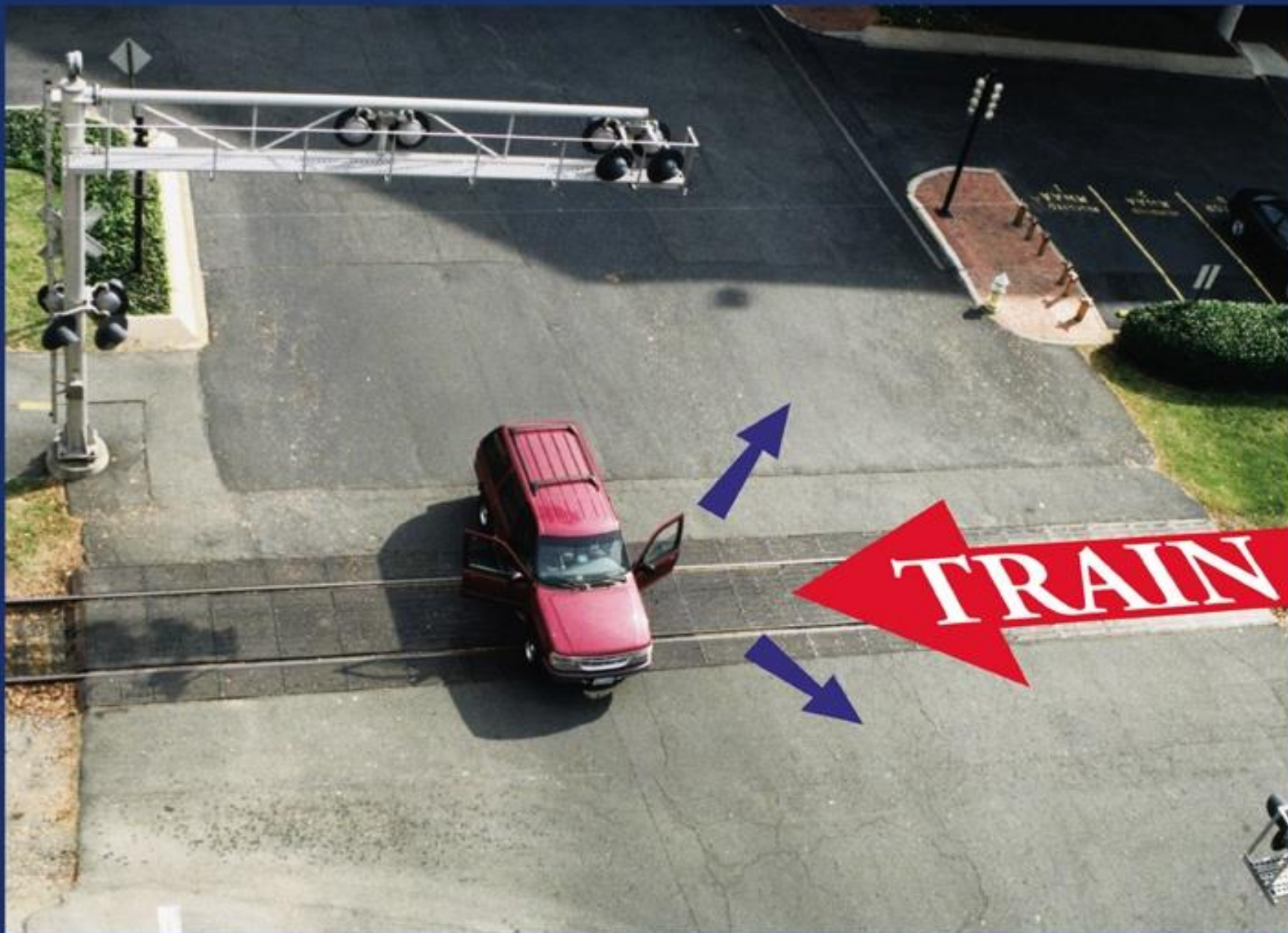


Don't Stop, Pass or Shift



A Situation to Avoid





Trespassers

It is illegal for any person to walk across or along railroad tracks at any place other than an authorized crossing.



RailPictures.Net - Image Copyright © Boet (Mac Cayo)

Trespassers

(Worn paths indicate dangerous and illegal access to crossing or walking along RR tracks.)

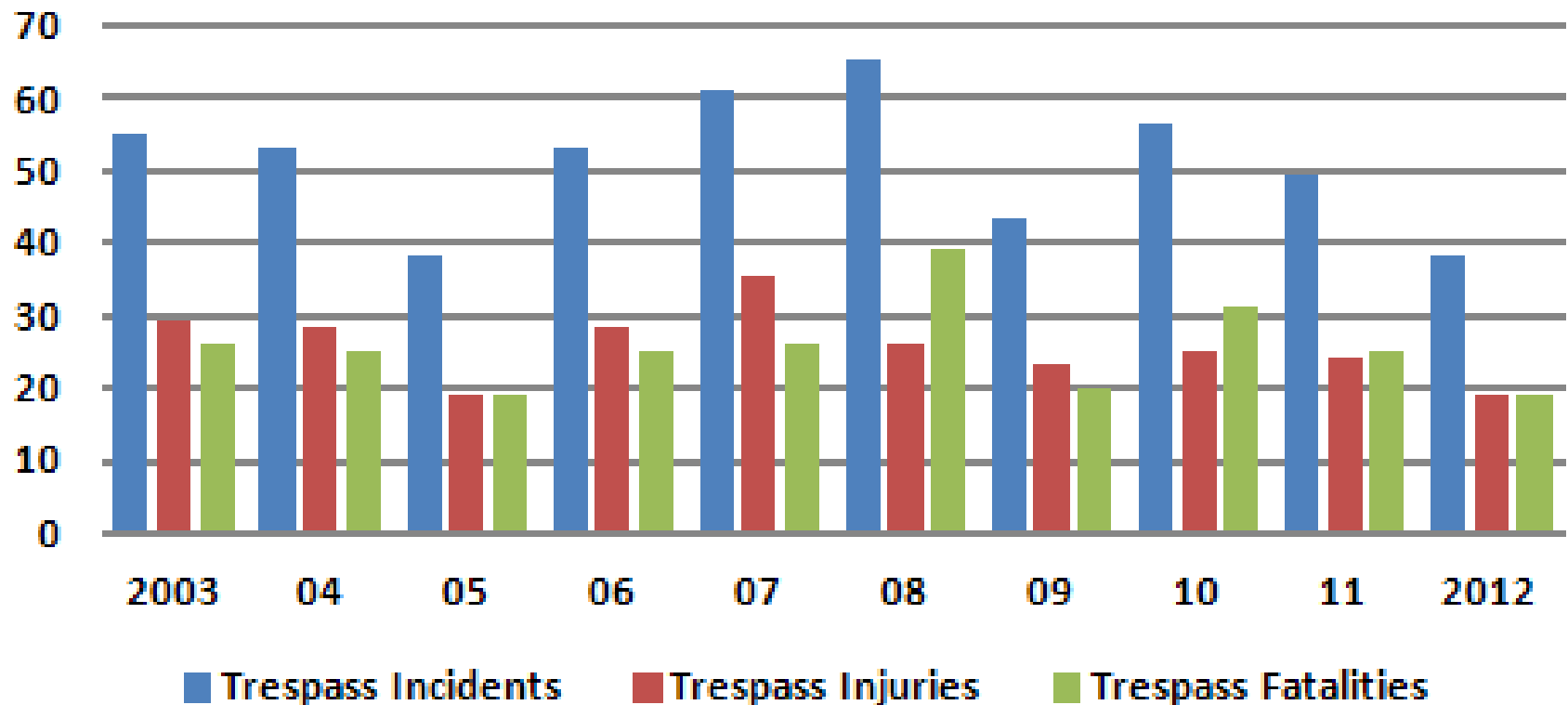


People Just Not Paying Attention

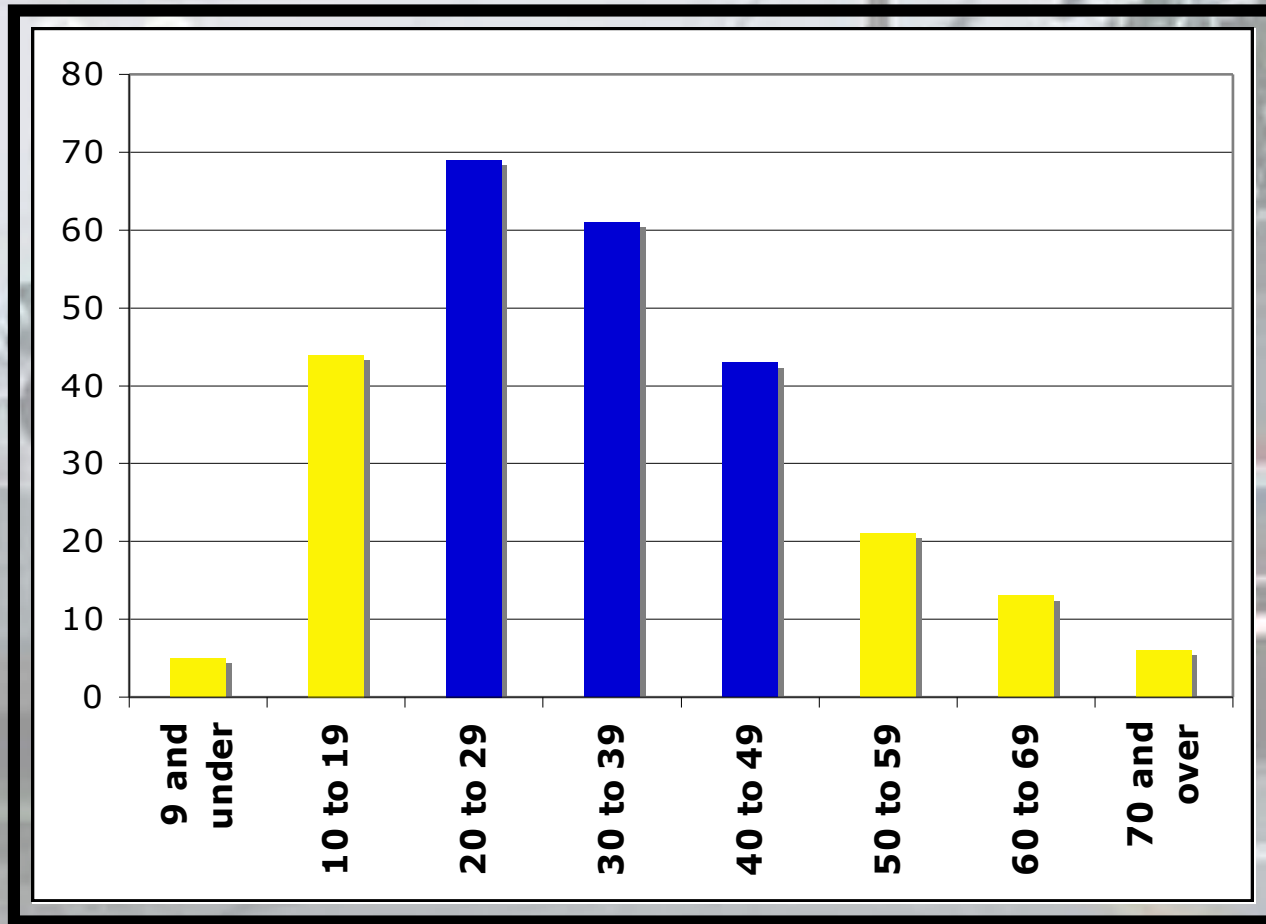


Trespass Incidents 2003-2012

**Trespass Incidents, Injuries & Fatalities:
2003 - 2012**



Trespassing Fatalities – Age



⇒ 66% occur in the prime of life

Trespassing on Railroad Property

5/18C-7503 No person may: walk, ride, drive or be upon or along the right of way or rail yard of a rail carrier within the State, at a place other than a public grade crossing.

- Any person found in violation of this shall be guilty of a Class C misdemeanor for a first offense. The person shall be subject to a mandatory fine of not less than \$150.00 or more than \$500.00.

Public Grade Crossings



Authorized Crosswalks



Signs there to remind people to Stay Off RR Property



Trespassers (Restrict Access to RR R.O.W.)



**TRESPASSING IS
DANGEROUS
AND ILLEGAL**



**STAY OFF
RAILROAD TRACKS**

Stay Off!
Stay Away!
Stay Alive!

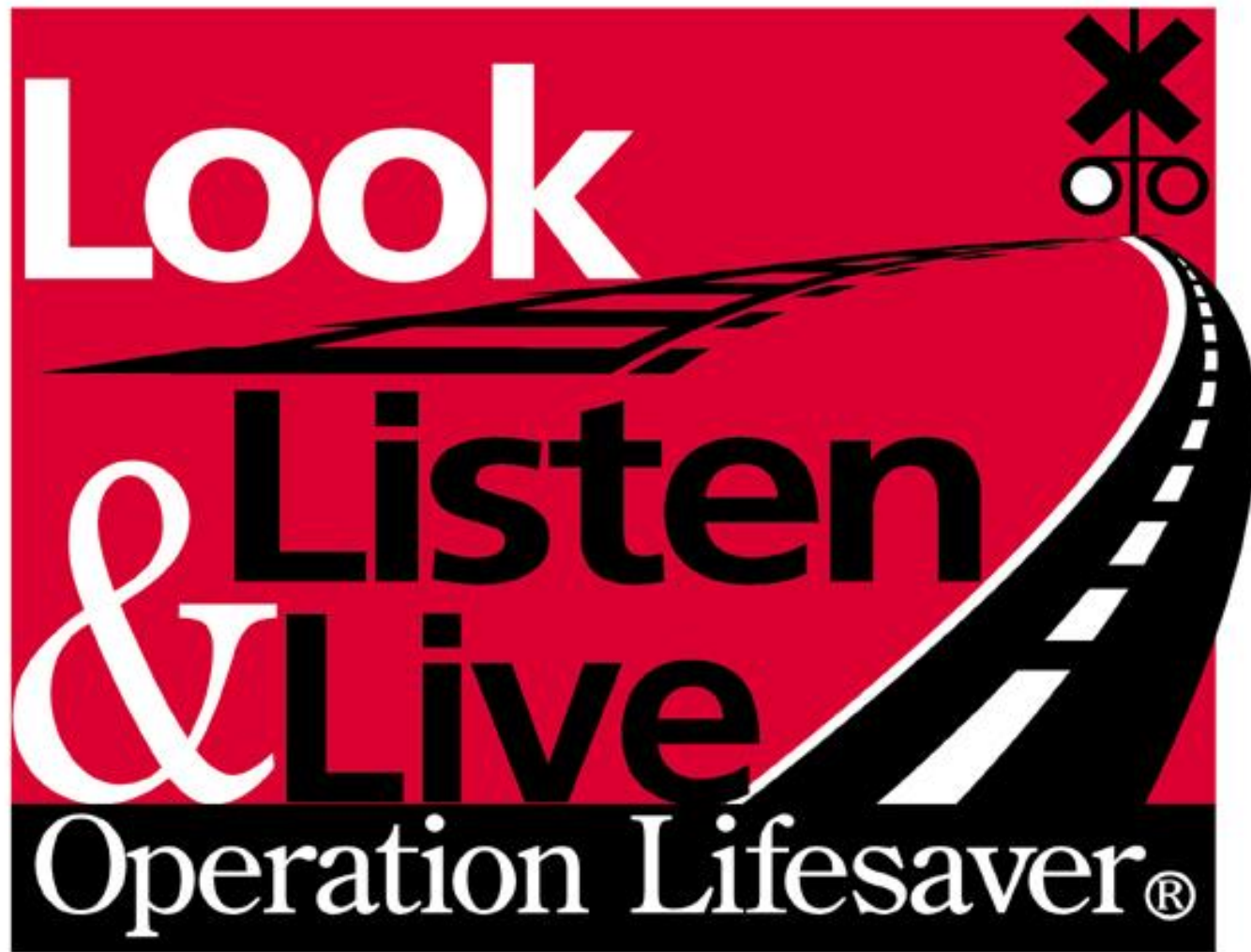


Within the three foot envelope



Covert Measures taken if needed





EXPERIENCE IT YOURSELF.

Public Involvement



**ILLINOIS
HIGH-SPEED
RAIL**

CHICAGO TO ST. LOUIS



Illinois Department
of Transportation

www.idothsr.org

Higher Speeds/Better Service

EXPERIENCE IT YOURSELF.

Safety comes first.
And second. And third.

HIGHER SPEED TRAINS
FROM DOWD IT TO PORTLAND

Beginning Fall 2012 there will be
higher speed trains in your area.
Be aware and educate yourself,
family and friends for safety.



Obey all
railroad crossing
signals.



Be alert. Don't
drink or use drugs
while on a train.



Secure your
baggage. Higher
speed is a fact.



ILLINOIS
HIGH-SPEED RAIL
CHICAGO TO ST. LOUIS

Scan with your Smartphone.
Learn more about
Educational opportunities.



For more information, visit www.idothsr.org
or call 1-800-444-4444. Project location: 1-800-444-4444.



It only made sense to build a train
as smart as the students who ride it.

Taking higher speed rail back to school
is just smart. While you're saving time,
you can experience a whole new level
of comfort and amenities, like Wi-Fi,
new menu options and completely
upgraded interiors.

Find out more at www.idothsr.org.

IT'S A WHOLE NEW SERVICE.



ILLINOIS
HIGH-SPEED RAIL
CHICAGO TO ST. LOUIS

Scan with your Smartphone.
Learn more about
educational opportunities.



For more information, visit www.idothsr.org
or call 1-800-444-4444. Project location: 1-800-444-4444.



ILLINOIS
HIGH-SPEED RAIL
CHICAGO TO ST. LOUIS



Illinois Department
of Transportation

www.idothsr.org

Get Your Information from the Source

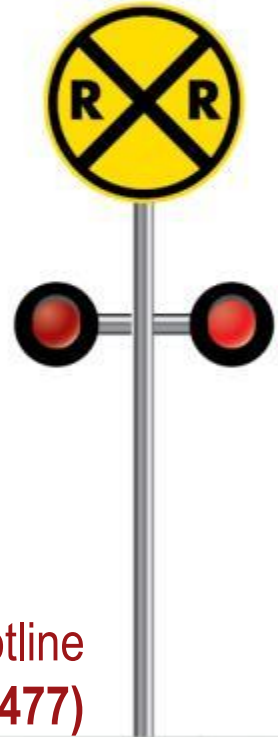
EXPERIENCE IT YOURSELF.



www.idothsr.org



<http://www.facebook.com/illinoishighspeedrail>



Project Hotline
1-855-IDOT-HSR (436-8477)

EXPERIENCE IT YOURSELF.



**OPERATION
LIFESAVER®**

Illinois

Chip Pew
(312) 636-3034
cpew@icc.illinois.gov



EXPERIENCE IT YOURSELF.

Questions



**ILLINOIS
HIGH-SPEED
RAIL**

CHICAGO TO ST. LOUIS



Illinois Department
of Transportation

www.idothsr.org

EXPERIENCE IT YOURSELF.

Thank You



**ILLINOIS
HIGH-SPEED
RAIL**

CHICAGO TO ST. LOUIS



Illinois Department
of Transportation

www.idothsr.org