


EXPERIENCE IT YOURSELF.



**ILLINOIS
HIGH-SPEED
RAIL**

CHICAGO TO ST. LOUIS



**Gardner-South
Wilmington
High School**

December 2, 2014

Chicago-St. Louis Corridor Benefits

EXPERIENCE IT YOURSELF.



- » **Reduction in travel time by about an hour**
- » **Enhanced reliability**
- » **New passenger cars and locomotives**
- » **New/rehabilitated stations**
- » **Safety improvements**



**ILLINOIS
HIGH-SPEED RAIL**
CHICAGO TO ST. LOUIS



www.idothsr.org

Construction: Before & After

EXPERIENCE IT YOURSELF.



Before



After



**ILLINOIS
HIGH-SPEED RAIL**
CHICAGO TO ST. LOUIS



www.idothsr.org

4 Quadrant Gates

EXPERIENCE IT YOURSELF.



Pedestrian Gates

EXPERIENCE IT YOURSELF.



Equipment

EXPERIENCE IT YOURSELF.

- » Joint procurement with multiple states
- » New passenger cars
 - Accessible, car-borne lifts
- » New locomotives (125 mph capability)



EXPERIENCE IT YOURSELF.

Safety



**ILLINOIS
HIGH-SPEED
RAIL**

CHICAGO TO ST. LOUIS



Illinois Department
of Transportation

www.idothsr.org

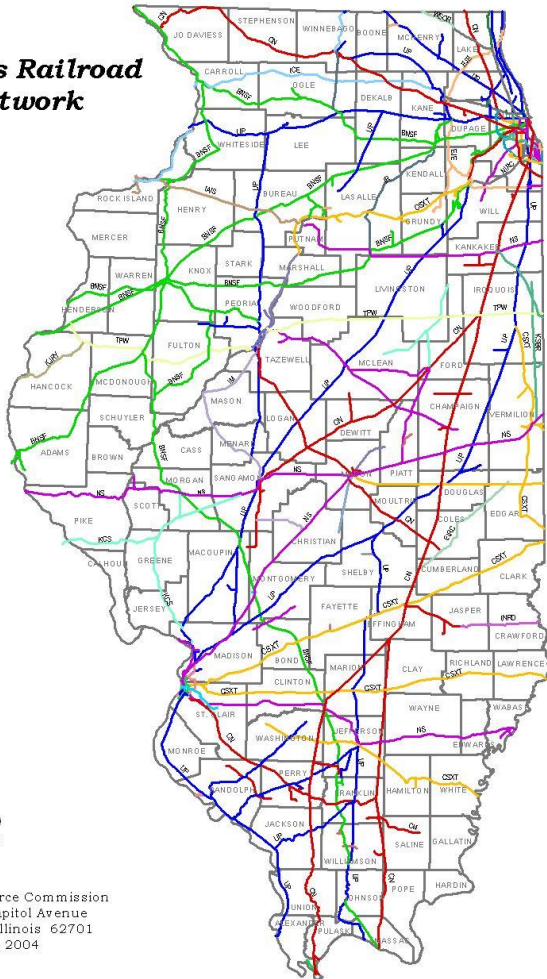
Railroad Safety Information for Gardner-South Wilmington High School



Illinois - High Density Railroad Traffic

Illinois Railroad Network

Rail Lines
ALS
BLOL
BNSF
BRC
BSDA
CCGZ
CCRZ
CN
COER
CP
CFL
CSL
CSSS
CSXT
CTML
DT
EFFF
EIRC
EJE
EJIS
ICE
IEB
IM
INFD
IR
KASK
KCS
KJRY
KSEB
LIRR
LS
LSBC
MJ
MRMZ
NIFC
NS
PPU
SIRS
TPW
TRFA
UP
VRRC
WSOR



Illinois Commerce Commission
527 East Capitol Avenue
Springfield, Illinois 62701
June 2004

- Nation's largest rail hub
- 50 Railroads/1,500 Trains
- Illinois ranks second only to Texas in the number of public crossings (7,795) and track miles (7,200).
- Texas is 4.5 times the size of Illinois in total square miles (261,000 to 55,500).
- Higher concentration of crossings, trains and population. More risk exposure.

94% of all crashes are driver error

(June 2004 DOT Hwy-Rail Grade Crossing Safety Program Report)



The Average Illinois Collision

- Clear **DECEMBER** day 5:00-6:00 pm
- Freight train traveling 40-49 mph vs. car
- Male 20-29 years old
- Disregarded active warning devices
- Roadway has less than 1000 cars per day
- Crossing experiences 2-9 trains each day

Weight Ratio



=



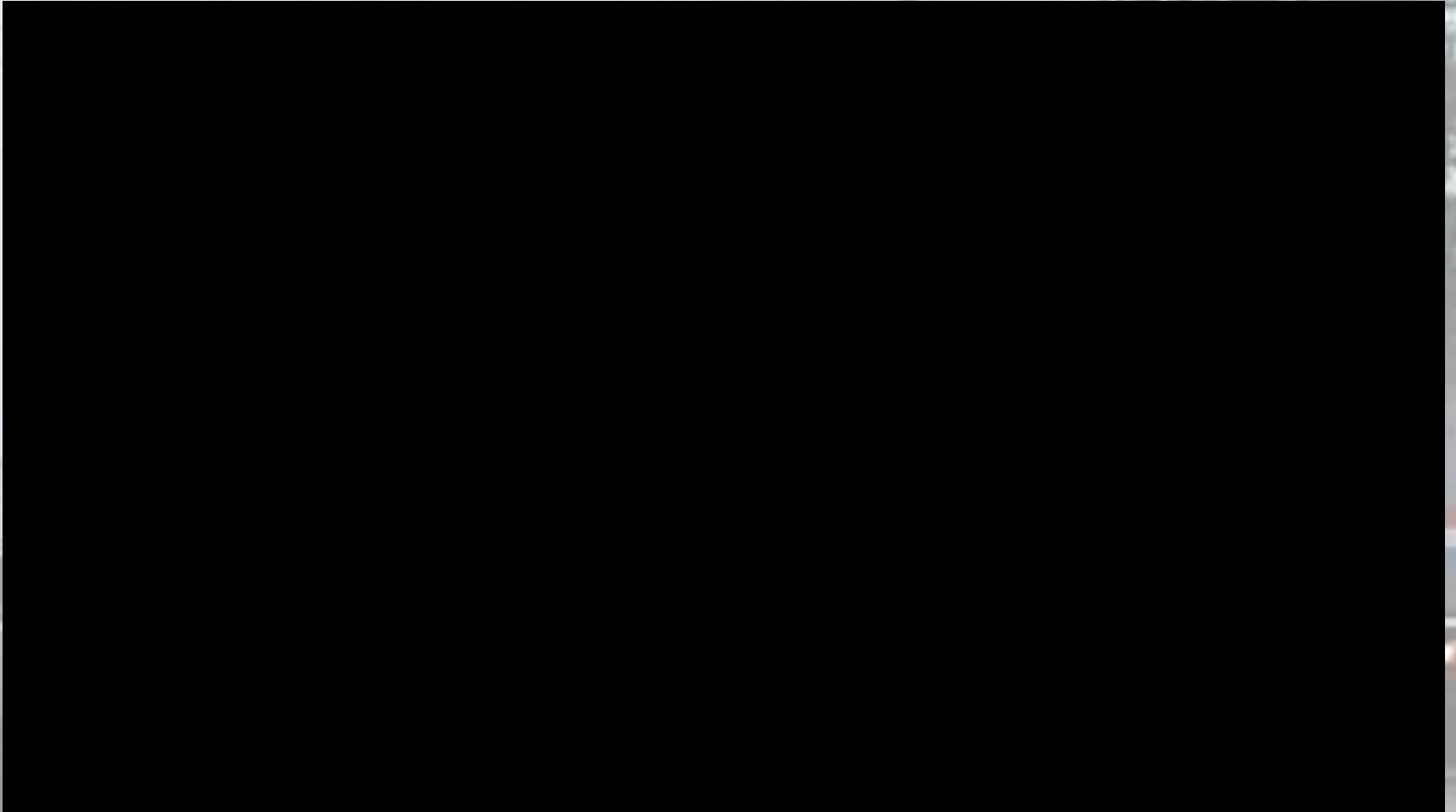
25% of crashes involve driving into the side of the train



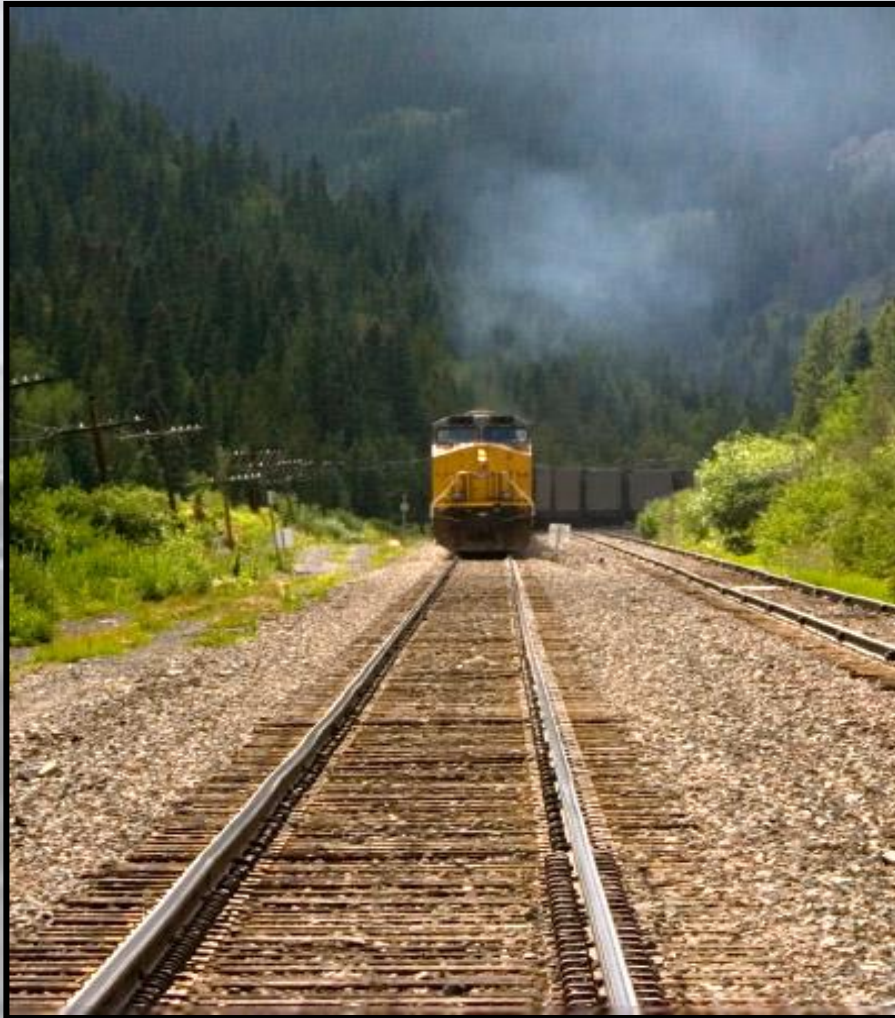
3/4 of those occur during daylight hours



Distractions



Speed Perception



Speed of an Approaching Train (Optical Illusion)

**Slow moving Freight Train at
10 MPH**



**Amtrak Train traveling at up to
110 MPH**



Approximate Stopping Distance

At 55 MPH



200 Ft



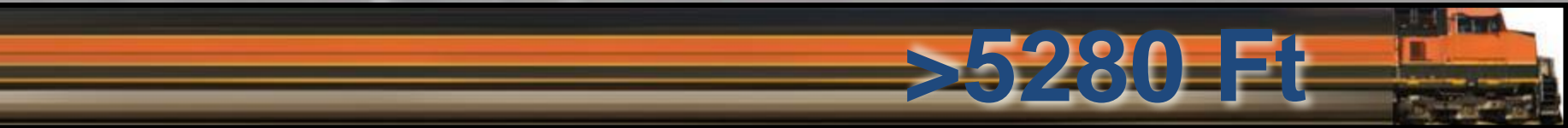
230 Ft



300 Ft



600 Ft



>5280 Ft



Trains Can't Swerve

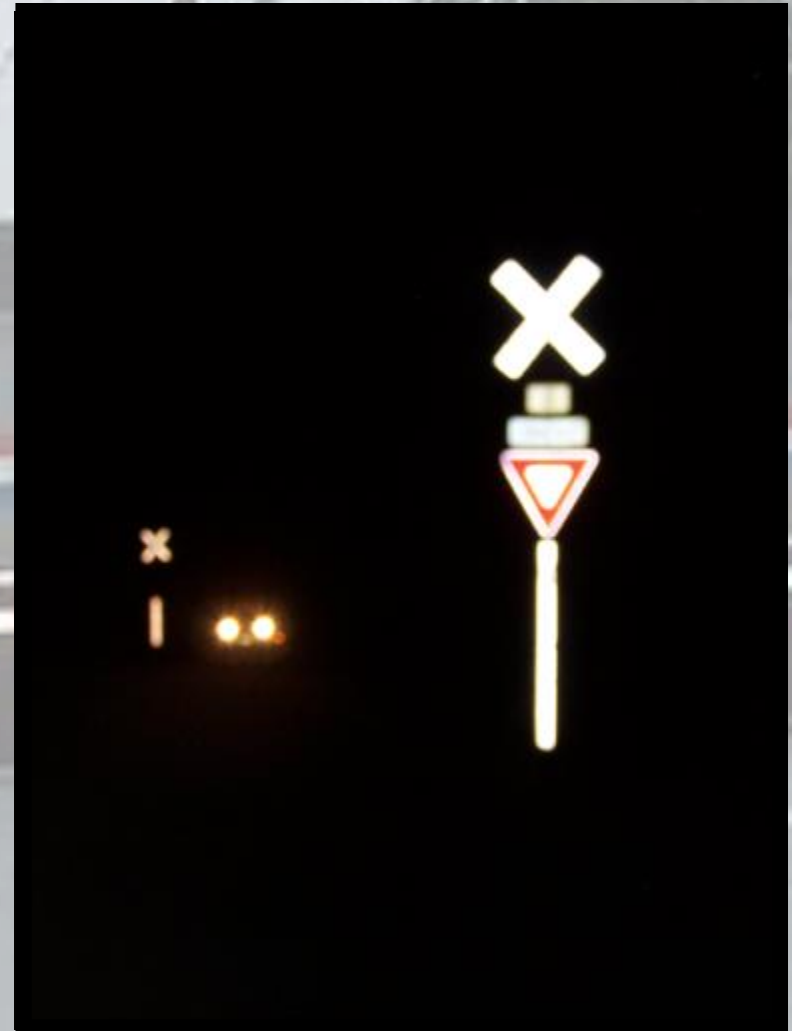




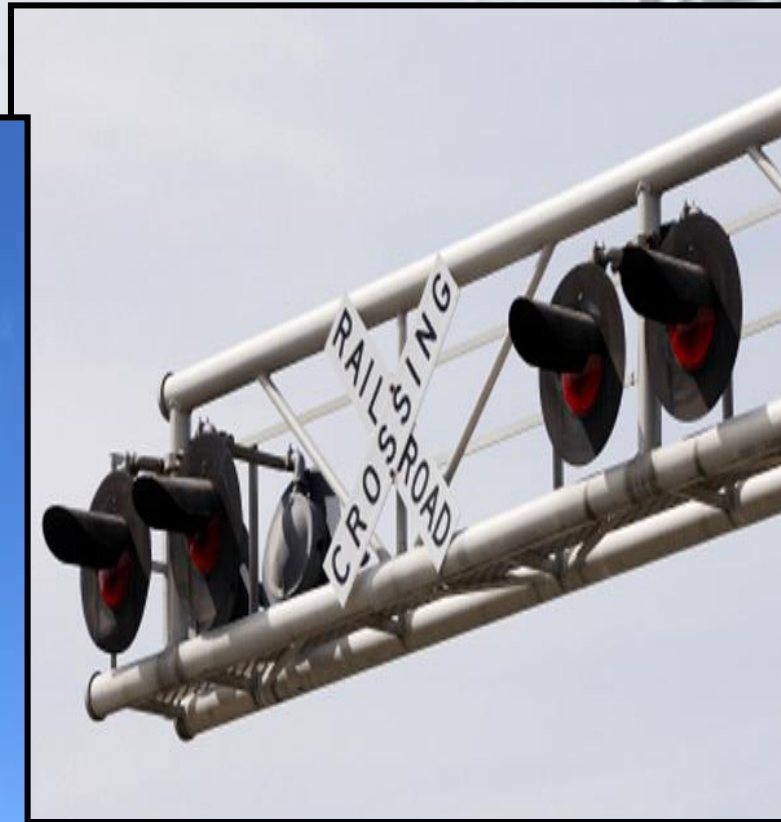
RAILROAD
CROSSING

CROSS ROAD

Passive Sign Means Yield



Active Warning Devices



Head End Cameras will see you.



Emergency Notification System

**TO REPORT STALLED
VEHICLE ON TRACKS OR
OTHER EMERGENCY
CALL 1-800-555-5555
AND REFER TO
CROSSING #123-123A
ON CHERRY STREET**



Provide the information listed on that sign.



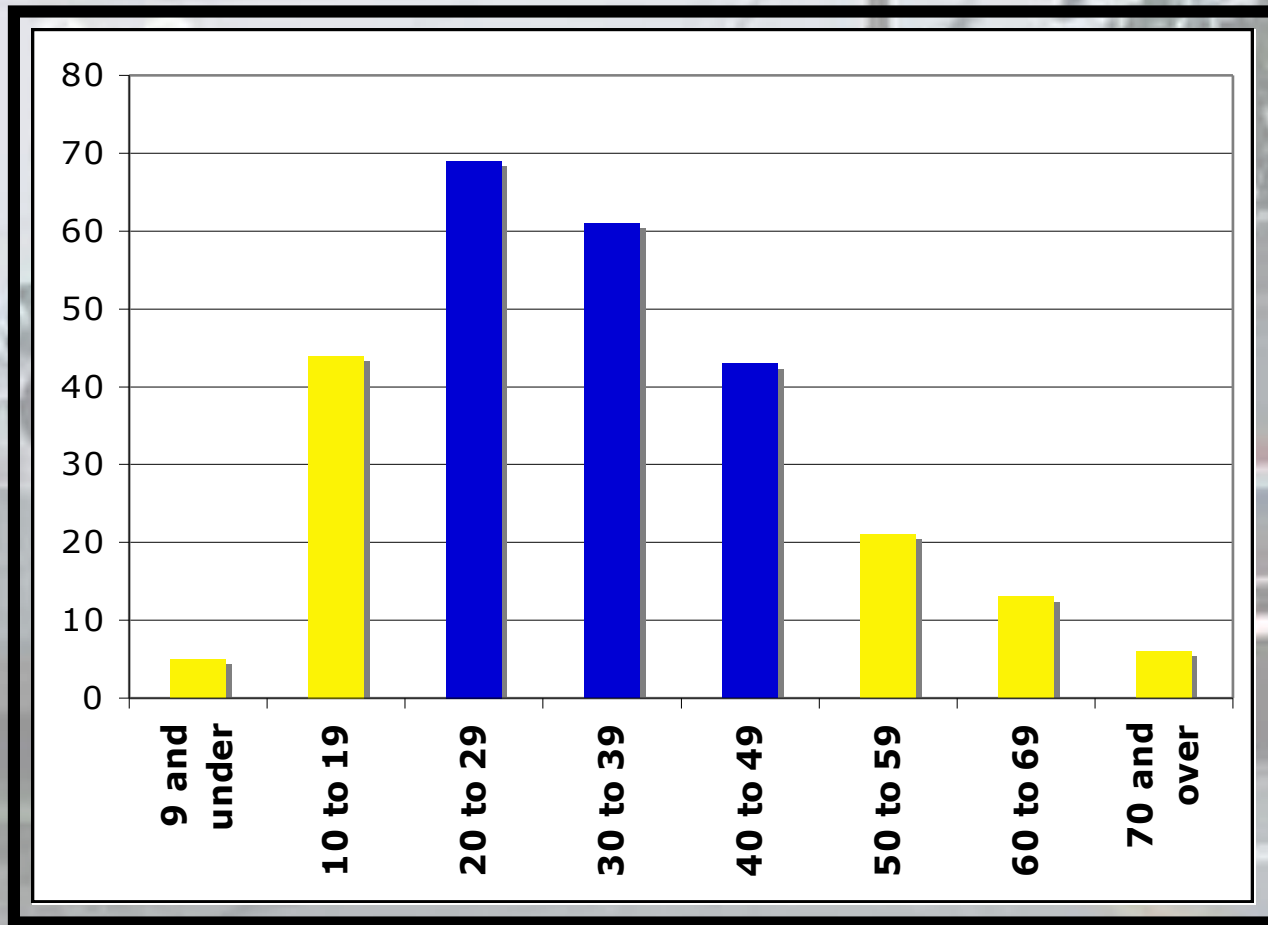


Trespassers

It is illegal for any person to walk across or along railroad tracks at any place other than an authorized crossing.

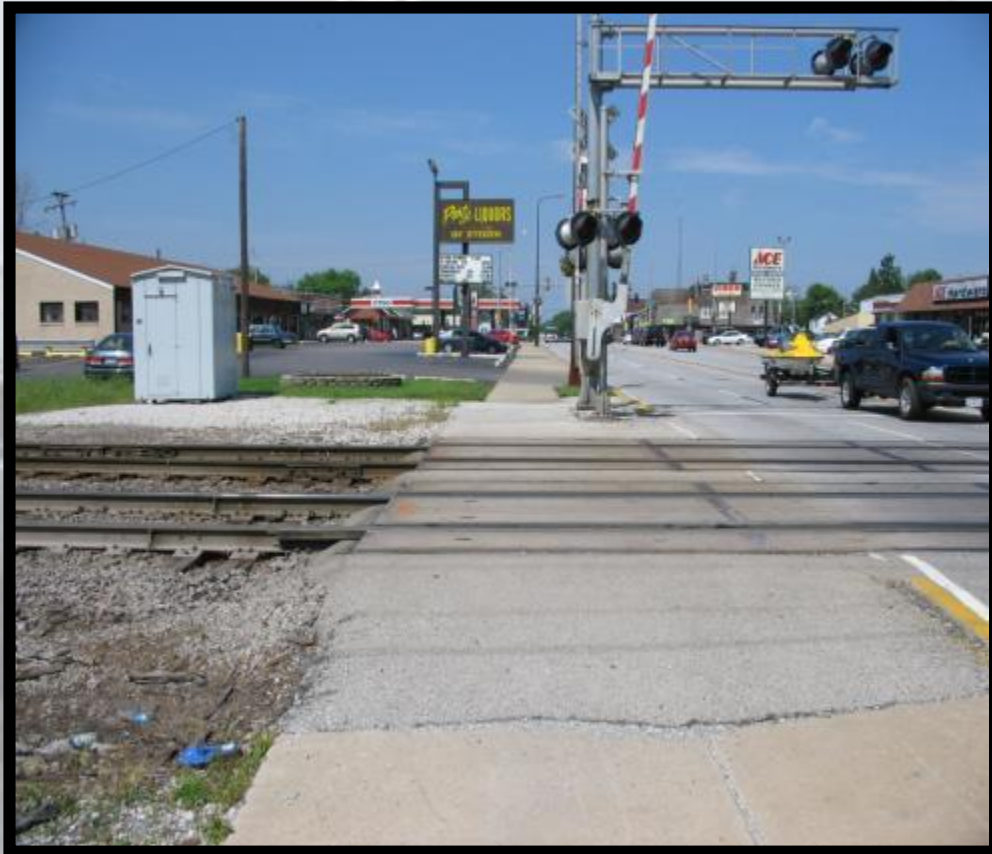


Trespassing Fatalities – Age



⇒ 66% occur in the prime of life

Public Grade Crossings



Authorized Crosswalks



Trespassers

Restrict Access to Railroad Right-of-Way





Within the three foot envelope



A Knock On The Door

EXPERIENCE IT YOURSELF.

Public Involvement



**ILLINOIS
HIGH-SPEED
RAIL**

CHICAGO TO ST. LOUIS



Illinois Department
of Transportation

www.idothsr.org

Higher Speeds/Better Service

EXPERIENCE IT YOURSELF.

Safety comes first.
And second. And third.

HIGHER SPEED TRAINS
FROM CHICAGO TO ST. LOUIS

Beginning Fall 2012 there will be higher speed trains in your area. Be aware and educate yourself, family and friends for safety.



Obey all railroad signals.



Be safe. Don't walk on or along the tracks.



Secure down areas for higher speed trains.



Download your smartphone. Learn more about Educational opportunities.



For more information, visit www.idothsr.org or call 1-800-427-4000.



It only made sense to build a train as smart as the students who ride it.

Taking higher speed rail back to school is just smart. While you're saving time, you can experience a whole new level of comfort and amenities, like Wi-Fi, new menu options and completely upgraded interiors.

Find out more at www.idothsr.org.

IT'S A WHOLE NEW SERVICE.



Scan with your Smartphone. Learn more about educational opportunities.

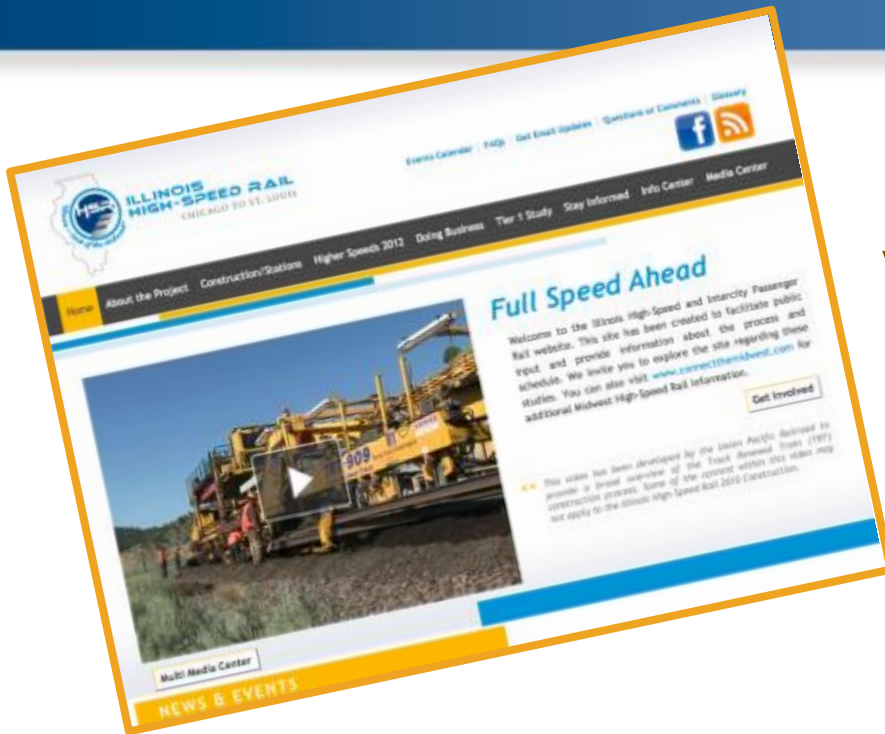


For more information, visit www.idothsr.org or call 1-800-427-4000.



Get Your Information from the Source

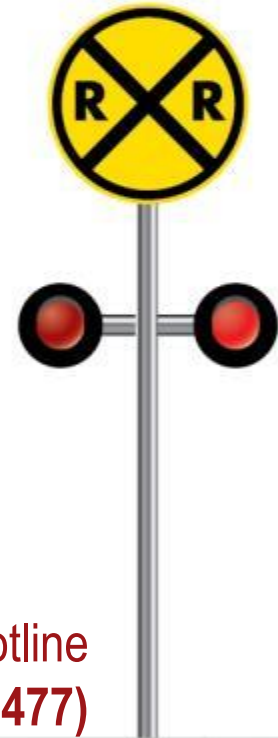
EXPERIENCE IT YOURSELF.



www.idothsr.org



<http://www.facebook.com/illinoishighspeedrail>



Project Hotline
1-855-IDOT-HSR (436-8477)

EXPERIENCE IT YOURSELF.



**OPERATION
LIFESAVER®**

Illinois



Chip Pew
(312) 636-3034
cpew@icc.illinois.gov

EXPERIENCE IT YOURSELF.

Questions



**ILLINOIS
HIGH-SPEED
RAIL**

CHICAGO TO ST. LOUIS



Illinois Department
of Transportation

www.idothsr.org

EXPERIENCE IT YOURSELF.

Thank You



**ILLINOIS
HIGH-SPEED
RAIL**

CHICAGO TO ST. LOUIS



www.idothsr.org