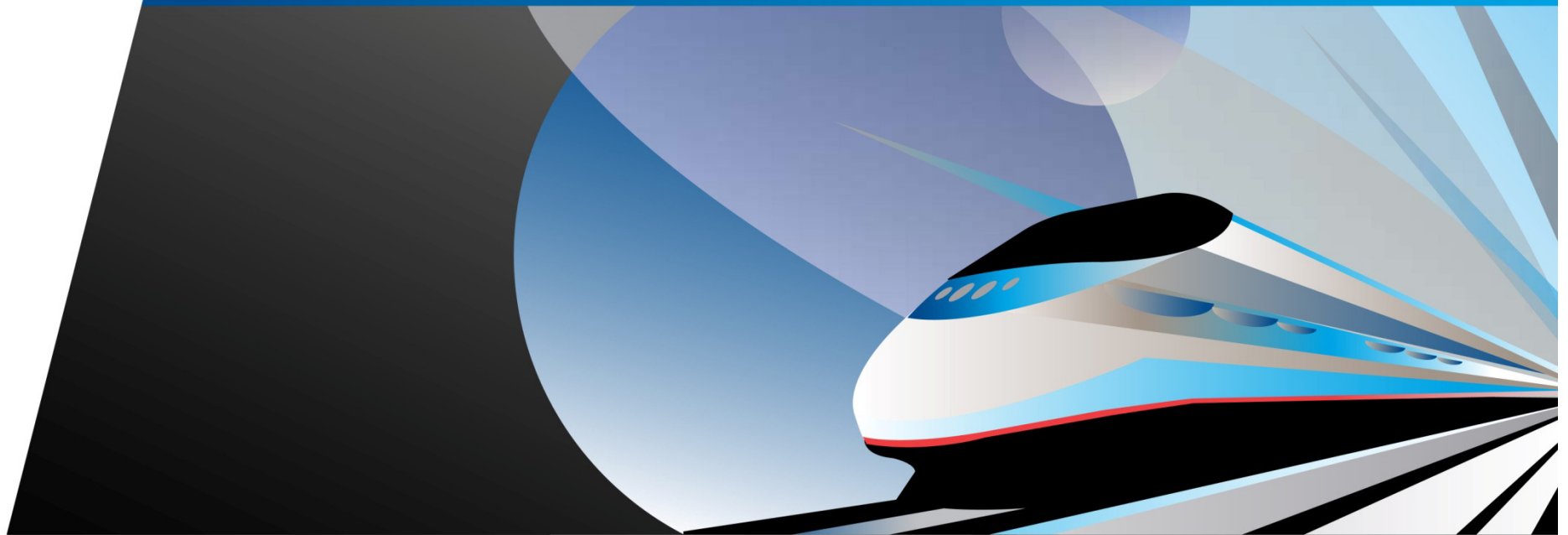




# WELCOME

## Chicago to Joliet High-Speed Rail (HSR) Tier 2 EIS



Illinois Department of Transportation



U.S. Department of Transportation

Federal Railroad Administration

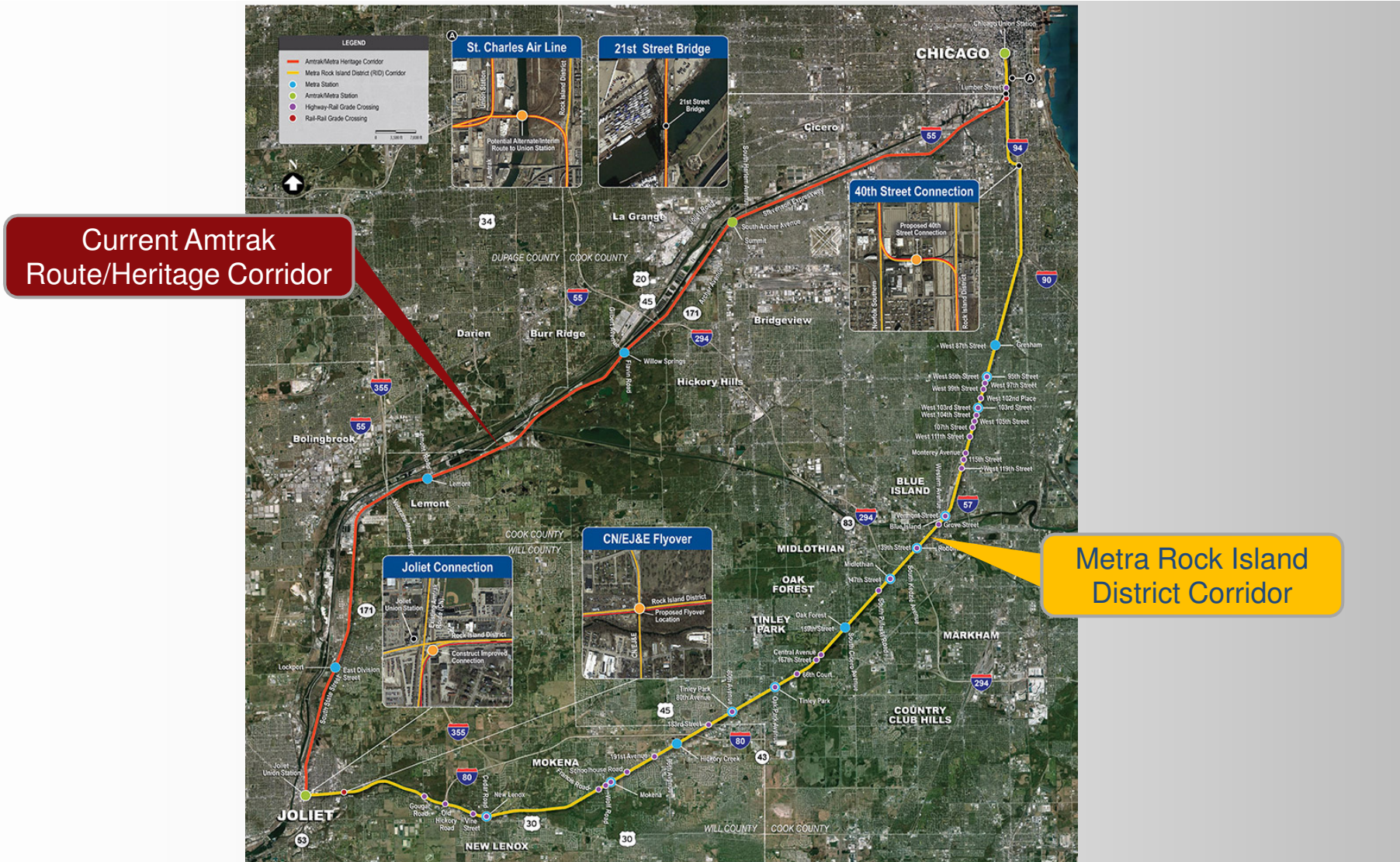
# Agenda

- Project Introduction
- Tiered Environmental Impact Statement (EIS) Process
- Preliminary Project Purpose and Need
- Range of Potential Alternatives
- Project Schedule/Next Steps
- Public Input/Comments

## Project Description

- IDOT and FRA preparing a Tier 2 EIS for the Chicago to Joliet High-Speed Rail Project
- This project is a component of the overall Chicago to St. Louis High-Speed Rail Program
- Will Evaluate Section 2 of the Selected Alternative from the Chicago to St. Louis High-Speed Rail Tier 1 Record of Decision (ROD)

# Project Location and Description



# Project History

## ■ Previous Studies

- 110 MPH Service to be implemented between Joliet and Alton by 2017
- 2004 Chicago-St. Louis HSR Program Record of Decision (ROD)
- 2011 Union Pacific Railroad Track Improvements Project from Joliet to Dwight EA



# Project History

## ■ Previous Studies

- 2012 Chicago to St. Louis HSR Tier 1 EIS and ROD
  - Additional Track through the Corridor
  - Additional Round Trips Per Day
  - Increased Speed North of Joliet and South of Alton
  - Shift Intercity Passenger Service to the Metra Rock Island District Corridor

# Project History

- Additional Tier 2 Studies
  - Tier 2 EIS between Granite City and St. Louis
  - Tier 2 EA for Railroad Grade Separation South of Springfield
  - Tier 2 Environmental Evaluation of the Springfield Railroad Improvements

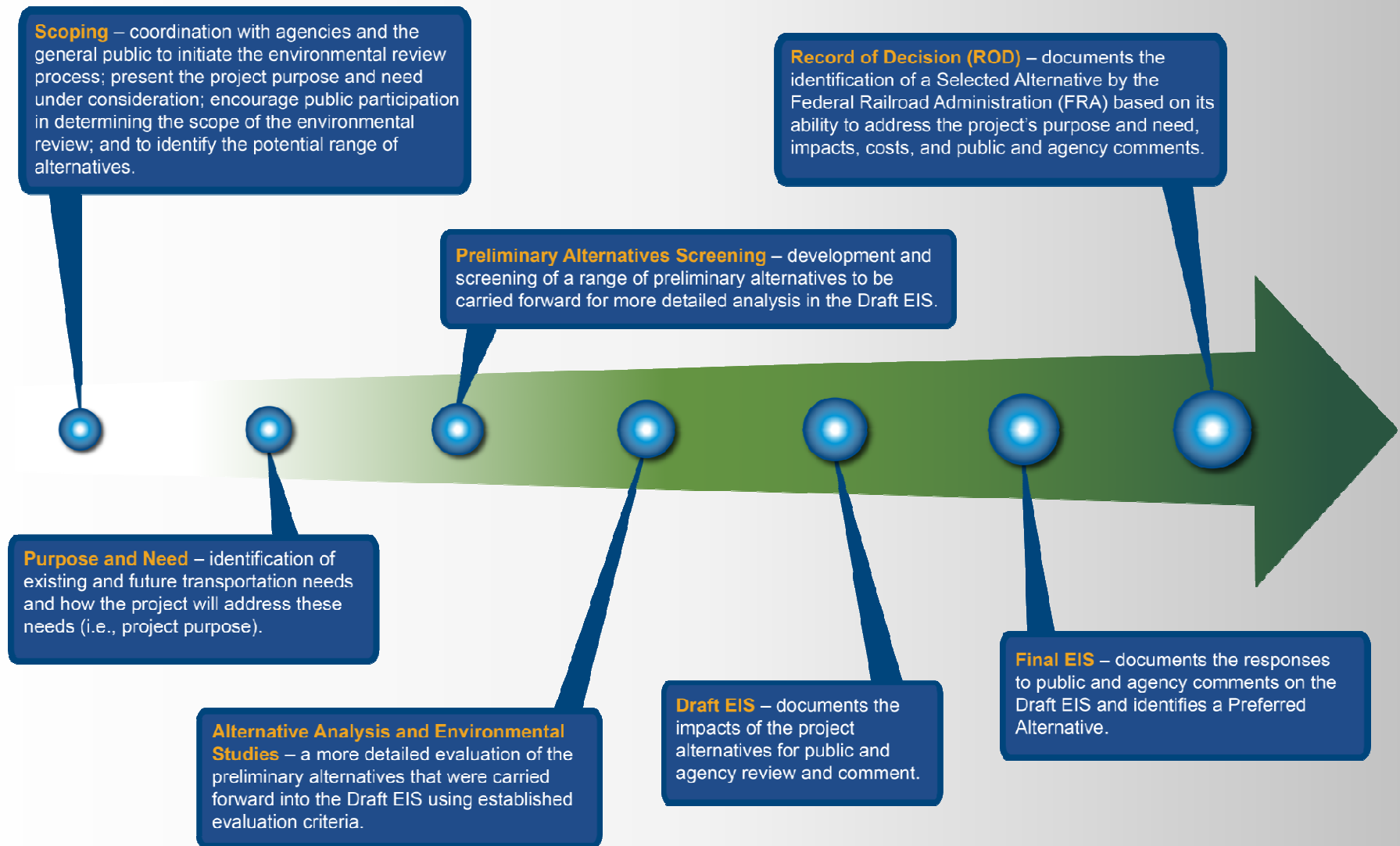
# Tiered EIS Process

*A phased environmental review process used in the development of complex projects.*

- **Tier 1 EIS** addresses broad, corridor-level issues and alternatives.
- **Tier 2 EIS** addresses individual component projects of the Selected Alternative from the Tier 1 EIS in more detail.



# EIS Process



# Environmental Impacts

*The Tier 2 EIS will evaluate impacts for the following:*

- Socioeconomic Resources
- Natural Resources
- Public Parks and Recreation Areas/Section 4(f)
- Floodplains
- Special Waste
- Visual and Aesthetics
- Noise and Vibration
- Traffic/Transportation
- Air Quality
- Energy
- Cultural Resources/Section 106 and Section 4(f)

## Preliminary Project Purpose

- *Enhance the passenger transportation network*
- *Improve high-speed rail service*

# Preliminary Project Need

- *Inadequate capacity for expanded rail service*
- *Poor passenger rail reliability*
- *Infrequent rail service*
- *Travel times too long*
- *Safety*
- *Alternative modes subject to unreliability*

# Potential Range of Alternatives

Feature	No Build Alternative	Build Alternative
<b>Route</b>	Use existing route (along Canadian National/Metra Heritage Corridor Route).	Use Metra Rock Island District Route.
<b>Passenger Round Trips Per Day</b>	5	Increases in frequencies will be considered and evaluated.
<b>Operating Speed</b>	Up to 79 mph	Up to 110 mph will be considered and evaluated.
<b>Rail Infrastructure Improvements</b>	None	To be considered and evaluated: additional mainline tracks/sidings, 21st Street Bridge, St. Charles Air Line Connection, 40th Street Connection, CN/EJ&E Railroad Flyover, Joliet Connection.
<b>Grade Crossing Improvements</b>	None	Grade crossing warning device improvements and new grade separations will be considered and evaluated as part of the Build Alternative.
<b>Station Upgrades</b>	None. (Joliet Union Station improvements/modifications are planned as part of a separate project.)	Safety improvements to existing Metra Stations will be considered and evaluated to accommodate HSR through traffic.
<b>New HSR Station</b>	None	A new HSR station or improvements to an existing Metra Station to accommodate HSR service will be considered and evaluated.

# 40<sup>th</sup> Street Connection

## 40th Street Connection

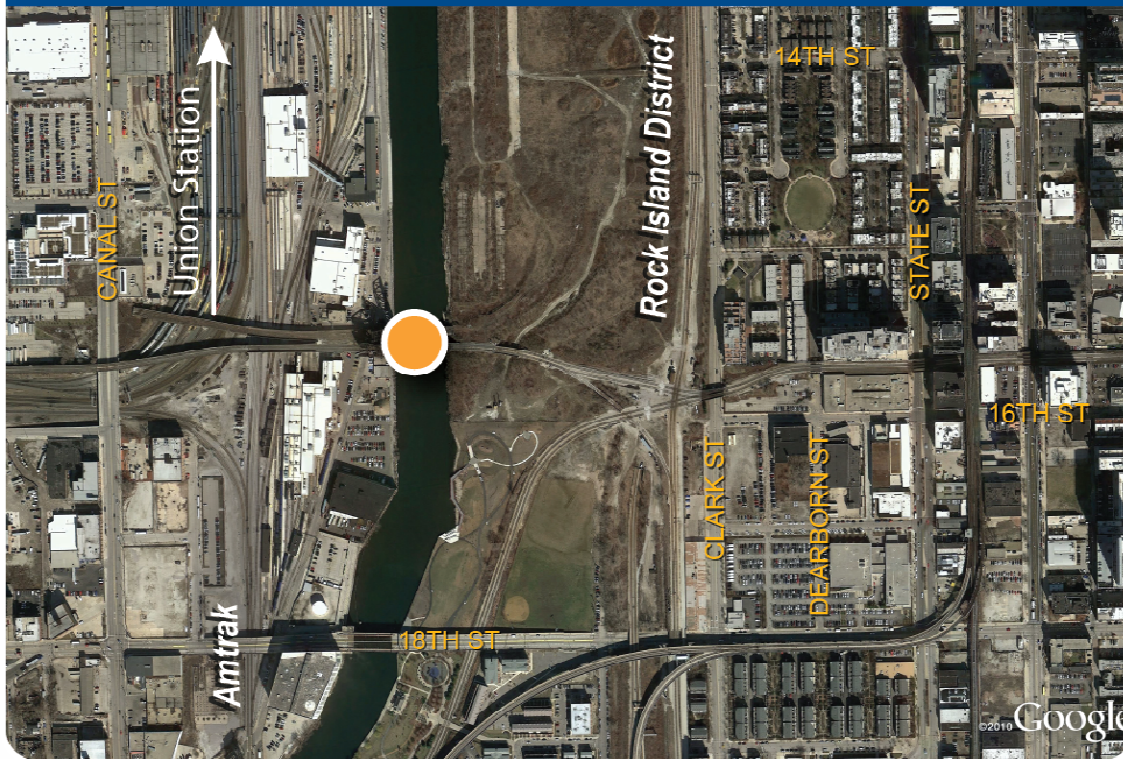


- New Connection at 40<sup>th</sup> Street
  - Feasibility will be investigated during Tier 2 Study
  - Alternate routes will also be considered



# St. Charles Air Line

## St. Charles Air Line



- Potential Connection in St. Charles Air Line Area to be Evaluated



# Measures of Effectiveness

*The following measures of effectiveness are being considered as ways to evaluate how well project alternatives meet the project's purpose and need.*

- Reduced passenger rail travel times
- Improved passenger rail service reliability/on-time performance
- Increased passenger rail frequency of trips
- Increased track capacity
- Increased percentage of travelers using passenger rail versus other modes of transportation

# Project Schedule

	Early 2014	Mid 2014	Late 2014	Early 2015	Mid 2015
Notice of Intent (NOI)	<i>Scoping Meetings</i>				
Environmental Studies and Alternative Analysis		<i>Public Meetings</i>			
Prepare Draft EIS			<i>Public Hearings*</i>		
Prepare Final EIS and ROD					

*\* The Public Hearings will be held following the Notice of Availability (NOA) of the Draft EIS and during the 45-day public comment period.*

# Next Steps



*Review Public and Agency Scoping Comments*



*Environmental Surveys*



*Preliminary Alternatives Evaluation*



*Public Meetings*

# Your Input is Needed

## *Here's how you can be involved:*

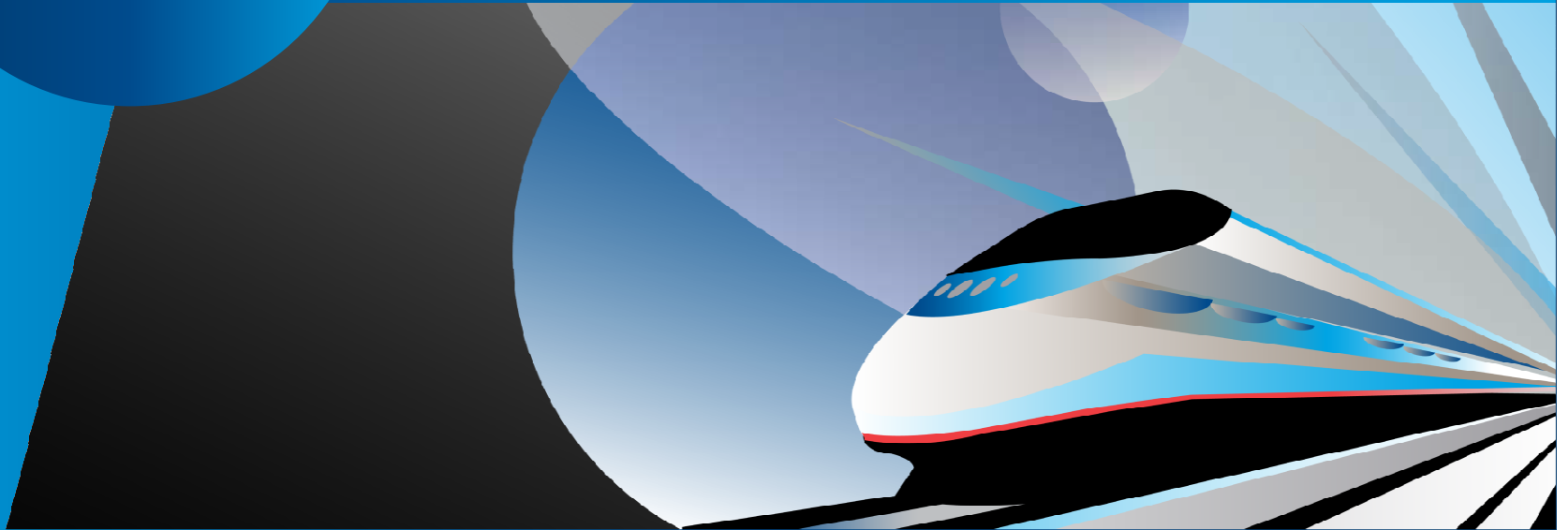
- Attend the public meetings and hearings and submit comments
- Visit the project website and submit comments
- Sign up to receive project newsletters
- Invite IDOT to meet with your community

## CONTACT US:

- **Website:** [www.idothsr.org](http://www.idothsr.org)
- **Phone:** 1-855-IDOT-HSR (436-8477)
- **Mailing Address:**  
Illinois Department of Transportation  
Attention: John Oimoen, Deputy Director, DPIT  
James R. Thompson Center  
100 West Randolph Street, Suite 6-600  
Chicago, Illinois 60601-3229



# Questions





# Thank You!



Illinois Department of Transportation



U.S. Department of Transportation

Federal Railroad Administration