

EXPERIENCE IT YOURSELF.



**ILLINOIS
HIGH-SPEED
RAIL**

CHICAGO TO ST. LOUIS

**Chicago - St. Louis
High-Speed Rail**

**Arlington Heights
Rotary Club**

July 31, 2014

Chicago-St. Louis Corridor Benefits

EXPERIENCE IT YOURSELF.



- » **Reduction in travel time by about an hour**
- » **Enhanced reliability**
- » **New passenger cars and locomotives**
- » **New/rehabilitated stations**
- » **Safety improvements**



**ILLINOIS
HIGH-SPEED RAIL**
CHICAGO TO ST. LOUIS



www.idothsr.org

Who's Involved?

EXPERIENCE IT YOURSELF.

Project Partners

- Illinois Department of Transportation (IDOT)
- Federal Railroad Administration (FRA)
- Union Pacific Railroad (UPRR)
- Amtrak
- Illinois Commerce Commission (ICC)
- Others

Support

- Parsons Brinckerhoff - Program Manager
- IDOT Consultants (PTB Advertisements) including Parsons Corp. for Tier 2 EIS
- UPRR Contractors/Consultants

Elected Officials

Business
Community

Regional
Agencies

General Public &
Interest Groups

Transportation
Providers

City/County
Technical Staff

High-Speed Service

EXPERIENCE IT YOURSELF.

- » **Higher Speed service between Dwight and Pontiac in operation since 2012**
- » **Service up to 110 miles per hour between Joliet and Carlinville by the end of 2015**
- » **High-Speed service from Joliet to East St. Louis by end of 2017**



**ILLINOIS
HIGH-SPEED RAIL**
CHICAGO TO ST. LOUIS



www.idothsr.org

High-Speed Rail Program Schedule

EXPERIENCE IT YOURSELF.

2010-2012

- Track reconstruction and upgrades

2012

- Procurement process for new high-speed rail cars
- Operation of trains up to 110 mph between Dwight and Pontiac

2013

- Procurement process for new high-speed rail locomotives

2015

- Significant infrastructure improvements in place to support speeds of up to 110 mph on the Joliet-Carlinville portion of the corridor
- Initial reductions in travel time

2015-2017

- Infrastructure improvements complete with increased speeds over entire Joliet-East St. Louis segment
- Travel time reduced by about an hour
- Springfield Third St. improvements
- Delivery of the new cars and new locomotives



**ILLINOIS
HIGH-SPEED RAIL**
CHICAGO TO ST. LOUIS



www.idothsr.org

Current Program Budget: \$1.53 Billion

EXPERIENCE IT YOURSELF.

| | |
|---|----------------------|
| > Track & Structures | \$681 Million |
| > Real Estate | \$24 Million |
| > Stations | \$33 Million |
| > Rolling Stock / Equipment | \$211 Million |
| > Signaling & Communications | \$202 Million |
| > Miscellaneous <i>(Grade Crossing Approaches, Overhead Bridges, Fencing, etc)</i> | \$176 Million |
| > Professional Services <i>(Program Management, Environmental/Design, Construction Oversight)</i> | \$203 Million |

Note: This summary does not include Tier 1 and Tier 2 EIS's, Joliet Multimodal, or other individual projects.



**ILLINOIS
HIGH-SPEED RAIL**
CHICAGO TO ST. LOUIS



www.idothsr.org

EXPERIENCE IT YOURSELF.



Program Activities



**ILLINOIS
HIGH-SPEED
RAIL**

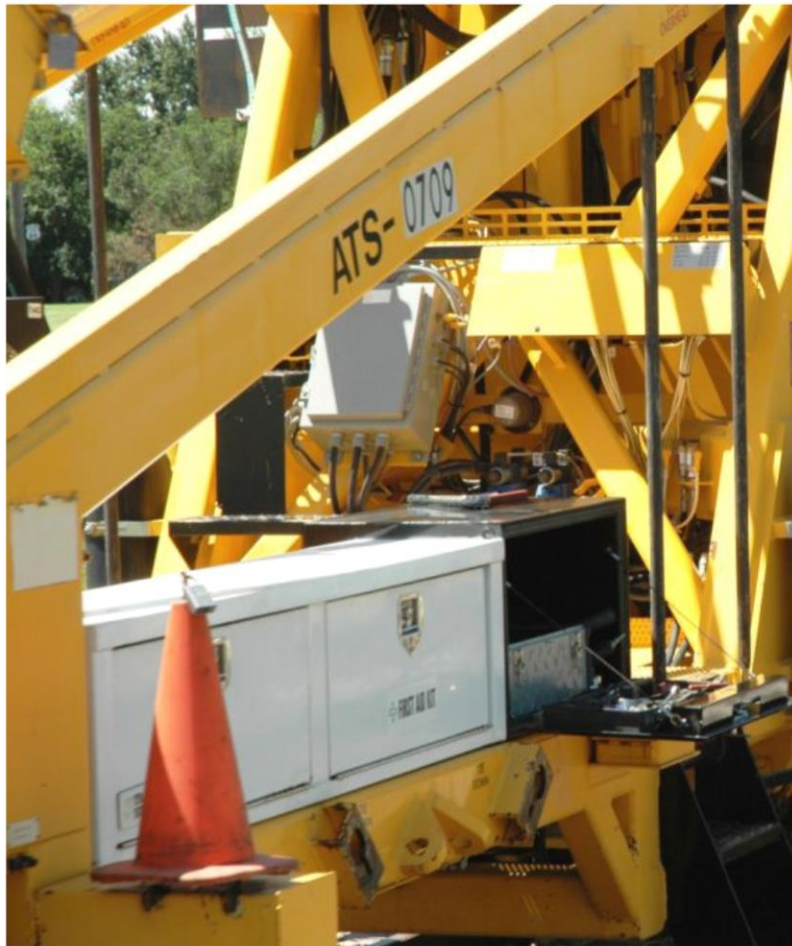
CHICAGO TO ST. LOUIS



www.idothsr.org

2014 Construction: Overall Program

EXPERIENCE IT YOURSELF.



- **Crossing and approach improvements**
- **New sidings and second track**
- **Upgrades to bridges and culverts**
- **Drainage improvements**
- **Installation and upgrades to signal and wayside equipment**
- **Installation of fencing**



**ILLINOIS
HIGH-SPEED RAIL**
CHICAGO TO ST. LOUIS



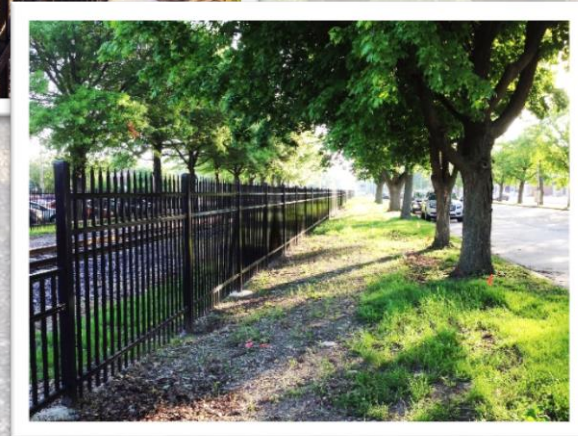
www.idothsr.org

Right-of-Way and Pedestrian Fencing

EXPERIENCE IT YOURSELF.

» **Fencing typically will be placed within one-foot of the Union Pacific Railroad right-of-way:**

- *In urban areas*
- *In select rural areas*



Grade Crossing Improvements

EXPERIENCE IT YOURSELF.

- » **New signal systems – Positive Train Control**
- » **Crossing safety devices**
- » **New signage and pavement markings**
- » **ADA accessibility directive signage**
- » **Pedestrian crossings at existing sidewalks and future locations with ICC petition**



Station Improvements

EXPERIENCE IT YOURSELF



- » New or renovated *facilities*
- » Increased passenger *safety, comfort and convenience*
- » *Lighting, site and parking* improvements
- » New ADA compliant *boarding platforms*



**ILLINOIS
HIGH-SPEED RAIL**
CHICAGO TO ST. LOUIS



www.idothsr.org

11

Station Improvements

EXPERIENCE IT YOURSELF.



» Joliet

- Received a discretionary grant to construct a multi-modal facility and to make safety improvements
- Two of three construction phases are underway; design work continues

» Dwight

- Proposed site south of the current location on Village property
- Plans in the design phase
- Categorical exclusion complete

» Pontiac

- Proposed site southwest of the existing station on City property
- Categorical exclusion almost complete
- Plans in the design phase



**ILLINOIS
HIGH-SPEED RAIL**
CHICAGO TO ST. LOUIS



Illinois Department
of Transportation

www.idothsr.org

Station Improvements



EXPERIENCE IT YOURSELF.



» Normal

- New multi-modal facility opened in July 2012
- Funded with a Transportation Investments Generating Economic Recovery (TIGER) grant
- Second platform and passenger grade separation to be built using High-Speed Rail (HSR) and other funding

» Lincoln

- Plans for upgrades in the conceptual design phase
- Categorical exclusion complete

Station Improvements

EXPERIENCE IT YOURSELF.

» Springfield

- Plans for upgrades in the design phase

» Carlinville

- Proposed site near the current facility
- Plans in the design phase

» Alton

- Environmental Assessment (EA) completed
- Selected to receive TIGER grant funding
- Will integrate a new IDOT HSR station and a multi-modal facility (in conceptual design phase)

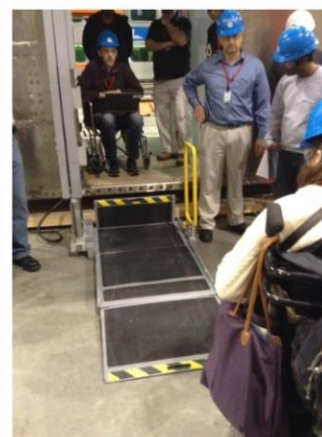
Equipment Procurement

EXPERIENCE IT YOURSELF.



> New high horsepower diesel locomotives

< Six new sets of equipment for Chicago to St. Louis corridor



ILLINOIS
HIGH-SPEED RAIL
CHICAGO TO ST. LOUIS

EXPERIENCE IT YOURSELF.



Program Milestones



**ILLINOIS
HIGH-SPEED
RAIL**

CHICAGO TO ST. LOUIS



www.idothsr.org

Construction Accomplishments

EXPERIENCE IT YOURSELF.

- **Installation of over 243 track-miles of new rail**
- **Interim renewal of 225 crossing surfaces and approaches**
- **Final renewal of 24 crossing surfaces and approaches**
- **Installed four quadrant gate systems within 120 miles of the corridor**
- **Completed crossing diagnostics at 270 locations**
- **Fencing installed**



Public Involvement Accomplishments

29 Public Meetings/Hearings

20 Railroad Safety Presentations

85 Community Events/Civic Presentations

EXPERIENCE IT YOURSELF.



**ILLINOIS
HIGH-SPEED RAIL**
CHICAGO TO ST. LOUIS



www.idothsr.org

EXPERIENCE IT YOURSELF.



Next Steps



**ILLINOIS
HIGH-SPEED
RAIL**

CHICAGO TO ST. LOUIS



www.idothsr.org

Next Steps

EXPERIENCE IT YOURSELF.



- » **Environmental studies continue through 2015**
- » **Construction continues between Joliet and East St. Louis through 2017**
- » **Land acquisition will proceed following the Uniform Relocation Act**



**ILLINOIS
HIGH-SPEED RAIL**
CHICAGO TO ST. LOUIS

EXPERIENCE IT YOURSELF.



Public Involvement



**ILLINOIS
HIGH-SPEED
RAIL**

CHICAGO TO ST. LOUIS



www.idothsr.org

Public Involvement

EXPERIENCE IT YOURSELF.



- » Visit www.idothsr.org
- **Crossing Closures**
 - **Event Calendars**
 - **Comment on Illinois High-Speed Rail Program**
 - **Sign up for Program e-mail notifications**



www.facebook.com/illinoishighspeedrail

1-855-IDOT-HSR (436-8477)

Business Opportunities

EXPERIENCE IT YOURSELF.

» **Visit the
Doing Business section
of www.idothsr.org**

- *Find details about the bidding process and current business opportunities*
- *Find related links for detailed procedures*



**ILLINOIS
HIGH-SPEED RAIL**
CHICAGO TO ST. LOUIS



www.idothsr.org

EXPERIENCE IT YOURSELF.

Questions?



**ILLINOIS
HIGH-SPEED
RAIL**

CHICAGO TO ST. LOUIS



www.idothsr.org

EXPERIENCE IT YOURSELF.

Thank you



**ILLINOIS
HIGH-SPEED
RAIL**

CHICAGO TO ST. LOUIS



www.idothsr.org